

INDEX OF SHEETS

SHEET NO.	DESCRIPTION
1	TITLE SHEET
2	PLAN VIEW
3	WALL PROFILE
4	TYPICAL SECTION & DETAILS
5	DETAILS
6	EROSION CONTROL & REVEGETATION

GENERAL NOTES

1. ALL CONSTRUCTION SHALL CONFORM TO THE COUNTY OF SANTA CRUZ DESIGN CRITERIA, THE STATE STANDARD PLANS AND THE APPLICABLE PROVISIONS OF THE STATE STANDARD SPECIFICATIONS.
2. THERE SHALL BE NO CHANGES IN THE APPROVED IMPROVEMENT PLANS WITHOUT PRIOR APPROVAL BY THE SANTA CRUZ COUNTY DEPARTMENT OF PUBLIC WORKS.
3. PLEASE CALL "UNDERGROUND SERVICE ALERT" (U.S.A.) AT 811 or 800-227-2600 BEFORE DIGGING.
4. THE ENGINEER PREPARING THESE PLANS WILL NOT BE RESPONSIBLE FOR, OR LIABLE FOR, UNAUTHORIZED CHANGES TO OR USES OF THESE PLANS. ALL CHANGES TO THE PLANS MUST BE APPROVED BY TRANSPORTATION ENGINEERING.
5. THE CONSTRUCTION CONTRACTOR AGREES THAT IN ACCORDANCE WITH GENERALLY ACCEPTED CONSTRUCTION PRACTICES, CONSTRUCTION CONTRACTOR WILL BE REQUIRED TO ASSUME SOLE AND COMPLETE RESPONSIBILITY FOR JOB SITE CONDITIONS DURING THE COURSE OF CONSTRUCTION OF THE PROJECT, INCLUDING SAFETY OF ALL PERSONS AND PROPERTY; THAT THIS REQUIREMENT SHALL BE MADE TO APPLY CONTINUOUSLY AND NOT BE LIMITED TO NORMAL WORKING HOURS, AND CONSTRUCTION CONTRACTOR FURTHER AGREES TO DEFEND, INDEMNIFY, AND HOLD DESIGN PROFESSIONAL HARMLESS FROM ANY AND ALL LIABILITY, REAL OR ALLEGED, IN CONNECTION WITH THE PERFORMANCE OF WORK ON THIS PROJECT, EXCEPTING LIABILITY ARISING FROM THE SOLE NEGLIGENCE OF DESIGN PROFESSIONAL.
6. THE CONTRACTOR SHALL POSSESS A CLASS "A" LICENSE AT THE TIME THE CONTRACT IS AWARDED.

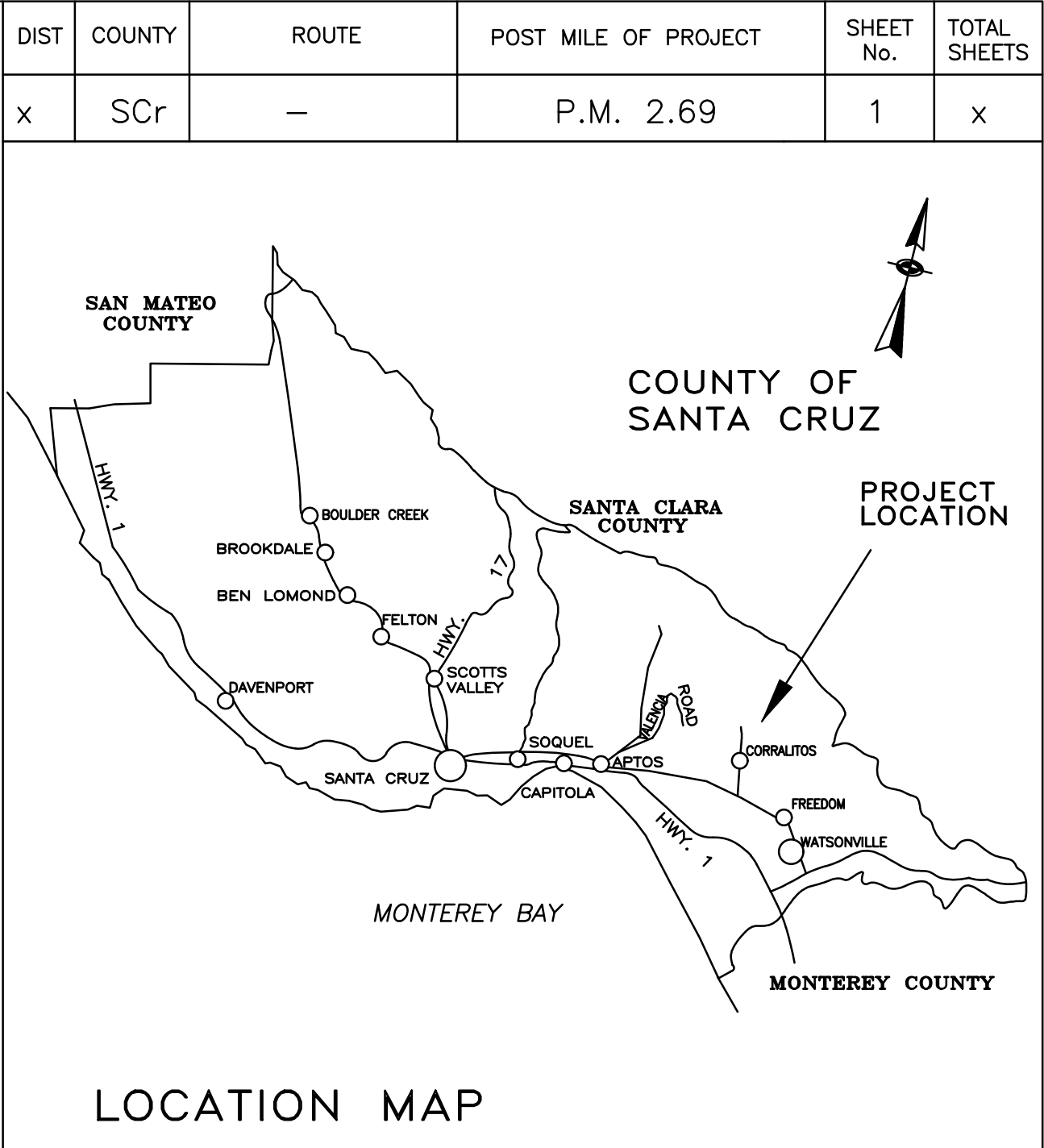
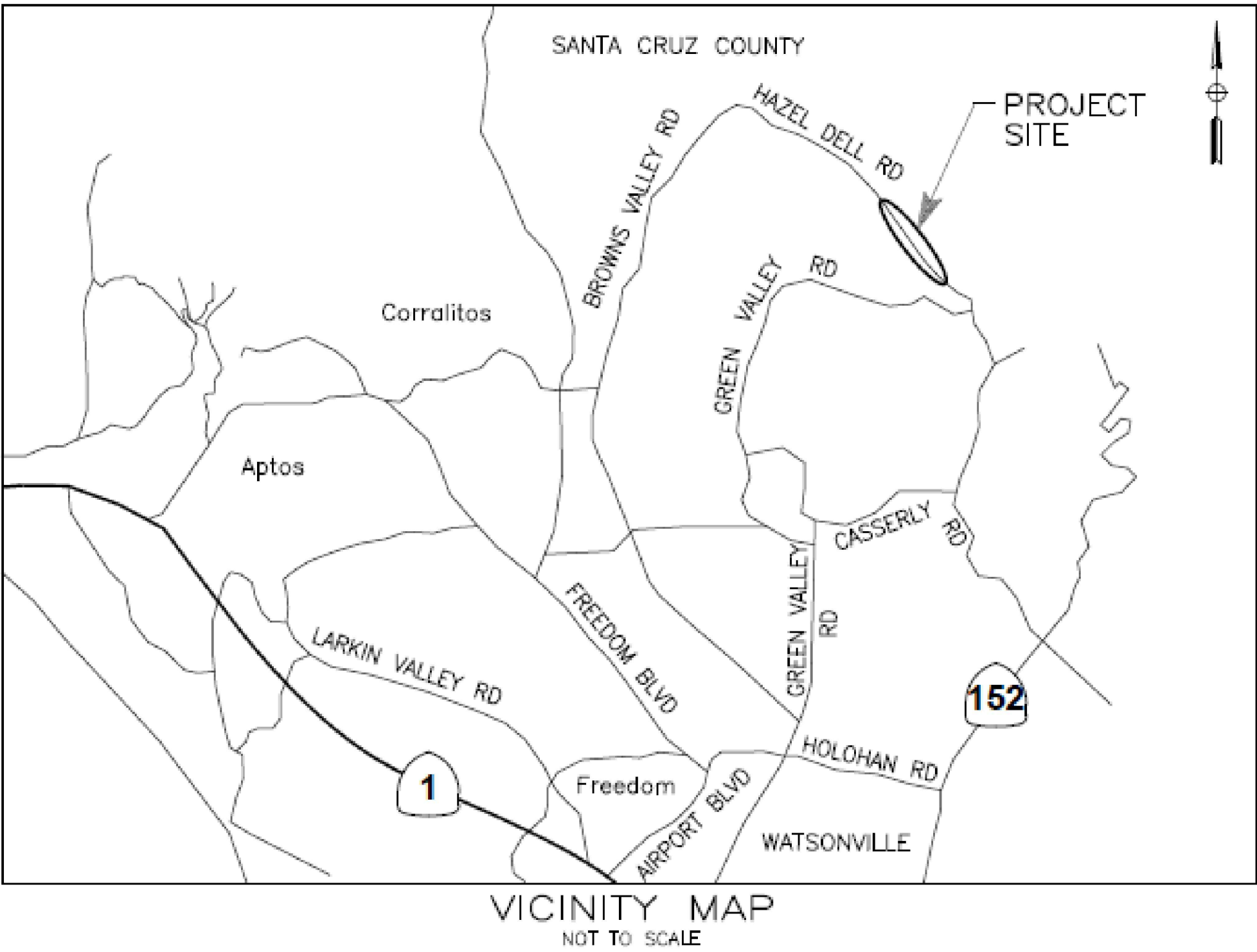
ABBREVIATIONS

A.B.	AGGREGATE BASE	KIP	1000 POUNDS FORCE
AC	ASPHALT CONCRETE	MBGR	METAL BEAM GUARD RAIL
APN	ASSESSOR'S PARCEL NUMBER	MIN	MINIMUM
APPROX	APPROXIMATE	N	NORTH
BOT	BOTTOM	(n)	NEW
BP	BOTTOM CONCRETE PIER	O.C.	ON CENTER
CL	CENTER LINE	OH	OVERHEAD
CL	CONTROL LINE	PERF	PERFORATED
CONC	CONCRETE	PG&E	PACIFIC GAS AND ELECTRIC
CONN	CONNECTION	PM	POST MILE
CONST	CONSTRUCTION	PRIN	PRINCIPAL
CP	CONTROL POINT	PT	POINT
DIA	DIAMETER	PVC	POLY VINYL CHLORIDE
E	EAST	RD	ROAD
(E), EXIST	EXISTING	REINF	REINFORCED
EA	EACH	RT	RIGHT
EL, ELEV	ELEVATION	R/W	RIGHT OF WAY
ENGR	ENGINEER	S	SOUTH
EP	EDGE OF PAVEMENT	SEC	SECTION
EST	ESTIMATE	SHT	SHEET
EXCAV	EXCAVATE, EXCAVATION	S.S.	SANDSTONE
FD	FOUND	STA	STATION
FT	FOOT, FEET	TP	TOP CONCRETE PIER
FTG	FOOTING	TYP	TYPICAL
GEN	GENERAL	U.B.	UNBONDED
GRD	GRADE	W	WEST
HDPE	HIGH DENSITY POLYETHYLENE	W/	WITH
HT	HEIGHT	&	AND
INV	INVERT	@	AT
IP	IRON PIPE	1ST	FIRST
JP	JOINT POLE	<	LESS THAN
		#	POUND

COUNTY OF SANTA CRUZ  
DEPARTMENT OF PUBLIC WORKS

PROJECT PLANS FOR CONSTRUCTION ON  
HAZEL DELL RD PM 2.69  
STORM DAMAGE REPAIR PROJECT  
FHWA DAF No. SCSRO-097-0  
Federal Project No. 15J9(104)

To be supplemented by CalTrans Standard Plans dated 2018



Design Engineer  
*Greg Jones*

**REGISTERED PROFESSIONAL ENGINEER**  
**GREG JONES**  
No. 61691  
Exp. 06-30-25  
CIVIL  
STATE OF CALIFORNIA

Senior Design Engineer  
*Joel LaCagnina*

Assistant Director of Public Works  
Transportation Division  
*Steve Wiesner*

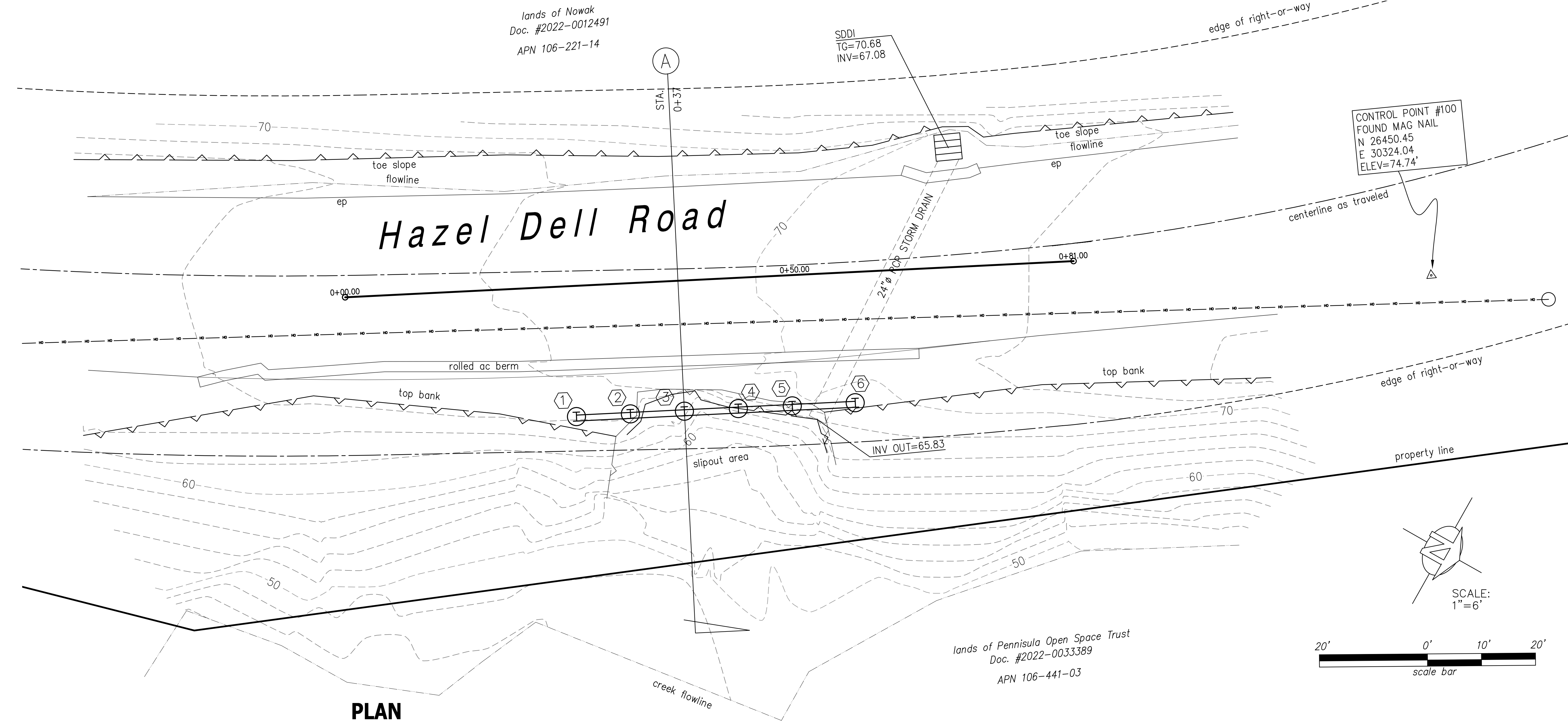
Director of Public Works  
*Matthew J. Machado*

Chair, Board of Supervisors

Date approved by Board of Supervisors

Reviewed by:		Reviewed by:		Reviewed by:	
Greg Martin		Alex Sandoval		Carisa Duran	
Traffic Engineer		Road Superintendent		Construction Engineer	

County Job No. P42426



PLAN

SCALE: 1" = 6'

SOLDIER PILE LOCATION

PILE NUMBER	STATION	OFFSET*
1	0+25	14.5' RT.
2	0+31	14.5' RT.
3	0+37	14.5' RT.
4	0+43	14.5' RT.
5	0+49	14.5' RT.
6	0+55	14.5' RT.
7	0+62	14.5' RT.

BENCHMARK

x

LEGEND



SOLDIER PILE



PILE NUMBER

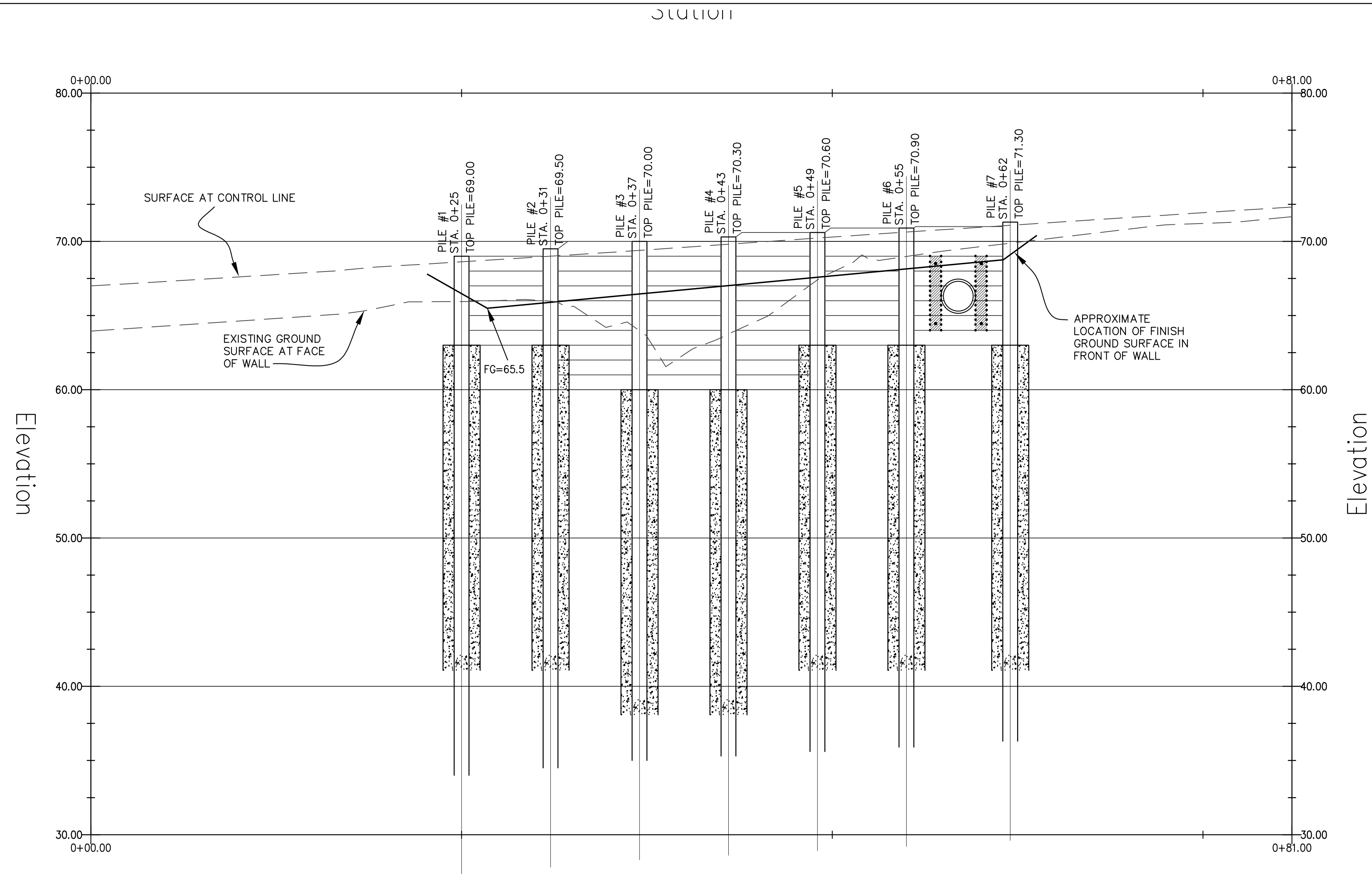
GENERAL CONSTRUCTION NOTES:

1. THE WORK HEREIN SHALL BE DONE IN ACCORDANCE WITH THE STANDARD SPECIFICATIONS & PLANS DATED 2018 OF THE STATE OF CALIFORNIA AS THEY MAY APPLY TO THE CONTRACT PLANS AND SPECIAL PROVISIONS.
2. DIMENSIONS OF THE STRUCTURAL ITEMS ARE SUBJECT TO TOLERANCES SPECIFIED IN THE STANDARD SPECIFICATIONS AND THE THE MANUFACTURER(S) RECOMMENDATIONS.
3. REFER TO THE STANDARD SPECIFICATIONS & SPECIAL PROVISIONS FOR THE STRUCTURE BACKFILL REQUIREMENTS FOR THE PILE WALL.
4. THE CONTRACTOR SHALL BE RESPONSIBLE FOR THE PROTECTION AND REPAIR OF ANY DAMAGE(S) TO PRIVATE PROPERTY & ANY UTILITIES IN HAZEL DELL ROAD. THE EXACT LOCATION OF EXISTING UNDERGROUND UTILITIES IS NOT KNOWN.
5. ALL CLEARING, GRADING, AND EROSION CONTROL MEASURES SHALL BE COMPLETED NO LATER THAN OCTOBER 15, 202\_.
6. TRAFFIC CONTROL CONSTRUCTION AREA SIGNS SHALL CONFORM TO THE 2014 CA MUTCD.

PLAN VIEW

\* MEASURED TO CENTERLINE OF SOLDIER PILE WALL

BY	REVISION	DATE
PROJECT ENGINEER		
GREG JONES		
COUNTY OF SANTA CRUZ – DEPARTMENT OF PUBLIC WORKS		
HAZEL DELL ROAD PM 2.69		
STORM DAMAGE REPAIR PROJECT		
DRAWN: GRJ		
CHECKED: JSL		
DATE: -		
SCALE: 1"=6'		
JOB NO. P42426		
SHEET		
2 OF X		



PILE NUMBER	1	2	3	4	5	6	7
TOP OF PILE ELEV.	69.00	69.50	70.00	70.30	70.60	70.90	71.30
PILE LENGTH	X	X	X	X	X	X	X
TOP OF CIDH ELEV.	63.00	63.00	60.00	60.00	63.00	63.00	63.00
TIP OF PILE ELEV.	---	---	---	---	---	---	---
STEEL BEAM SIZE	W1 ---	W1 ---	W1 ---	W1 ---	W1 ---	W1 ---	W1 ---
NUMBER OF LAGGING MEMBERS	6	10	10	10	8	8	

### WALL ELEVATION

SCALE: 1" = 5' HOR&VERT

#### WORKING STRESS DESIGN

STRUCTURAL STEEL	$F_y$	=	50,000 PSI
TREATED TIMBER DOUGLAS FIR #1 (MIN.)	$F_b$	=	1,750 PSI
CONCRETE	$F_c$	=	1,350 PSI
	$F_c$	=	3,600 PSI

#### STRUCTURAL STEEL

- ALL WORK DONE UNDER THIS SECTION SHALL CONFORM TO THE REQUIREMENTS OF THE AMERICAN INSTITUTE OF STEEL CONSTRUCTION (AISC) SPECIFICATIONS AND THE CODE OF STANDARD PRACTICE.
- ALL STRUCTURAL STEEL MEMBERS OTHER THAN FASTENERS SHALL BE PAINTED WITH A ZINC RICH RUST INHIBITING PRIMER SUCH AS A TNE MEC BRAND TNE MEC-ZINC, OR THE EQUIVALENT.
- THE CONTRACTOR SHALL FIELD VERIFY ALL DIMENSIONS AND FIELD CONDITIONS PRIOR TO FABRICATING THE STEEL MEMBERS. IN THE EVENT OF A DISCREPANCY, NOTIFY THE ENGINEER PRIOR TO PROCEEDING.

#### NOTES:

- PILE TIP ELEVATIONS ARE TO BOTTOM OF STEEL PILE. THE CONC. FTG EXTENDS AN ADD'N' ONE FOOT BELOW THE END OF PILE.

### WALL PROFILE

COUNTY OF SANTA CRUZ – DEPARTMENT OF PUBLIC WORKS	PROJECT ENGINEER	DATE	REVISION	BY
HAZEL DELL ROAD PM 2.69	GREG JONES			
STORM DAMAGE REPAIR PROJECT				
DRAWN: GRJ				
CHECKED: JSL				
DATE: 03/28/25				
SCALE: 1"=5'				
JOB NO. P42426				
SHEET				
3 OF X				

