

From: Cami Corvin
To: gjensen@ci.capitola.ca.us; JClarke@ci.capitola.ca.us; mmorgan@ci.capitola.ca.us; MOrbach@ci.capitola.ca.us; [Manu Koenig](mailto:Manu.Koenig@ci.capitola.ca.us); [Second District; Justin Cummings](mailto:Justin.Cummings@ci.capitola.ca.us); [Felipe Hernandez](mailto:Felipe.Hernandez@ci.capitola.ca.us); [Fifth District; Board Of Supervisors](mailto:Board.Of.Supervisors@ci.capitola.ca.us); fkeeley@santacruzca.gov; gblakeslee@sccrtc.org; [Robert Tidmore](mailto:Robert.Tidmore@ci.capitola.ca.us); [Jamie Goldstein](mailto:Jamie.Goldstein@ci.capitola.ca.us); [City Manager; Sarah Christensen](mailto:Sarah.Christensen@ci.capitola.ca.us); pkhattis@santacruzsentinel.com; jesse@santacruzlocal.org; [Steve Clark](mailto:Steve.Clark@ci.capitola.ca.us); maria.orocho@watsonville.gov; [Tania Ortiz](mailto:Tania.Ortiz@ci.capitola.ca.us)
Subject: Encroachment maps of 38th and 41st Capitola
Date: Wednesday, June 11, 2025 2:58:10 PM
Attachments: [38th-41st encroachments.pdf](#)

******CAUTION:** This is an EXTERNAL email. Exercise caution. DO NOT open attachments or click links from unknown senders or unexpected email. ****

Dear Council, RTC Staff, and Commissioners,

I have attached the encroachment maps for 38th Avenue (Castle Mobile Estates) and 41st Avenue (Capitola Commons) so that you can refer to my previous email about the encroachments at both locations. This clearly shows that the ROW at Capitola Commons on 41st is encroaching in the same manner as Castle Mobile Estates. Yet, the Commons are not being asked to remove the encroachments, while the low-income senior housing is.

Why is that? I believe the RTC Commissioners and the Capitola City Council need to ask the RTC Staff this question.

Thank you for your time,
Cami Corvin



Camilla "Cami" Corvin

Notary Public

Legal Document Assistant #59

Contract Paralegal

Corvin's Legal Services

1840 41st. Ave., Suite 205

Capitola, CA 95010

408-406-4137

<https://corvinslegalservices.com/>

Review my services? <https://corvinslegalservices.com/recommend/>

Vice President

Think Local First Santa Cruz

<https://thinklocalsantacruz.org/board-and-staff>

DISCLAIMER TO CONSUMERS: I am NOT an attorney, cannot give legal advice, and my office is not a law firm. I am only allowed to fill out documents at your direction.

FOR ATTORNEYS: I am a paralegal pursuant to California B.P.C. §6450. I can only provide paralegal services under contract with a licensed California attorney.

This electronic message, including any accompanying documents, is confidential and may contain privileged information under federal and/or state law. If you are neither the intended recipient nor responsible for delivering the message to the intended recipient, you are not authorized to read, share, forward, distribute, copy, or take any other action regarding the message or

any attachments. Also, you are not authorized to take or forbear from any legal action based on the message's contents. Please notify the sender immediately if you have received this communication in error. Thank you.

RECORD OF SURVEY

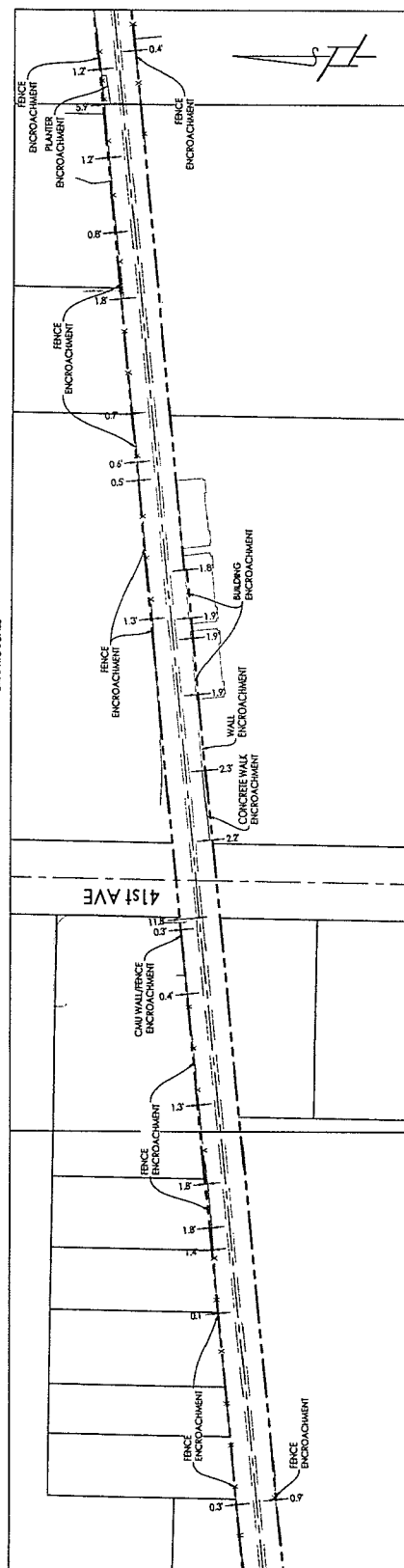
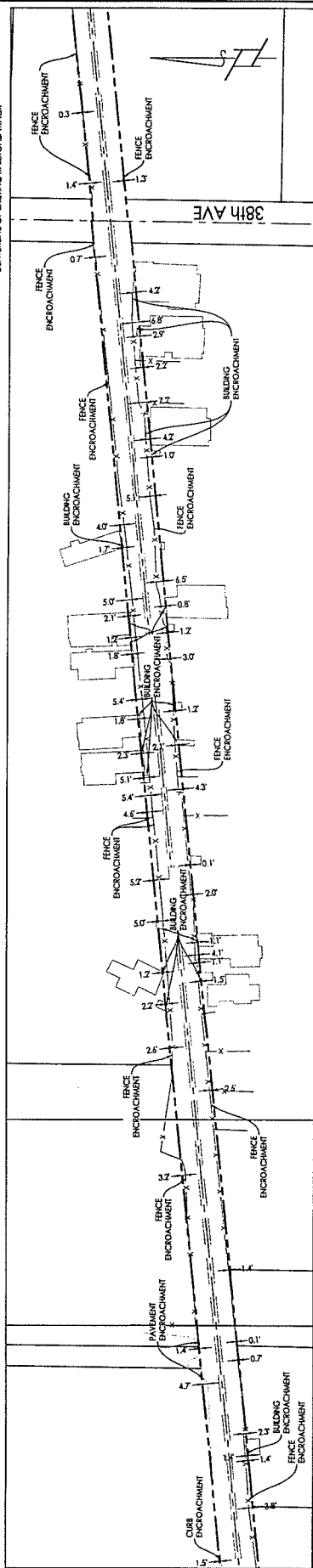
BEING A SURVEY OF A PORTION OF LAND DESCRIBED IN V72-1 NO. 24, NO. 25, NO. 26, V72-2 NO.1, NO. 2, NO. 3, NO. 4, OF QUIT CLAIM DEEDS TO SANTA CRUZ COUNTY REGIONAL TRANSPORTATION COMMISSION RECORDED AS DOCUMENT NO. 2012-0050154 AND DOCUMENT NO. 2012-0050155 OF OFFICIAL RECORDS, COUNTY OF SANTA CRUZ, STATE OF CALIFORNIA.

JANUARY 2024


PREPARED AT THE REQUEST OF SANTA CRUZ COUNTY REGIONAL TRANSPORTATION COMMISSION
(SEGMENT 10 SCCRTC RAIL TRAIL)

LEGEND

- FOUND MONUMENT AS NOTED
 _____ SANTA CRUZ COUNTY REGIONAL TRANSPORTATION
 _____ COMMISSION RAILROAD RIGHT-OF-WAY
 _____ CENTERLINE OF EXISTING RAILROAD TRACK

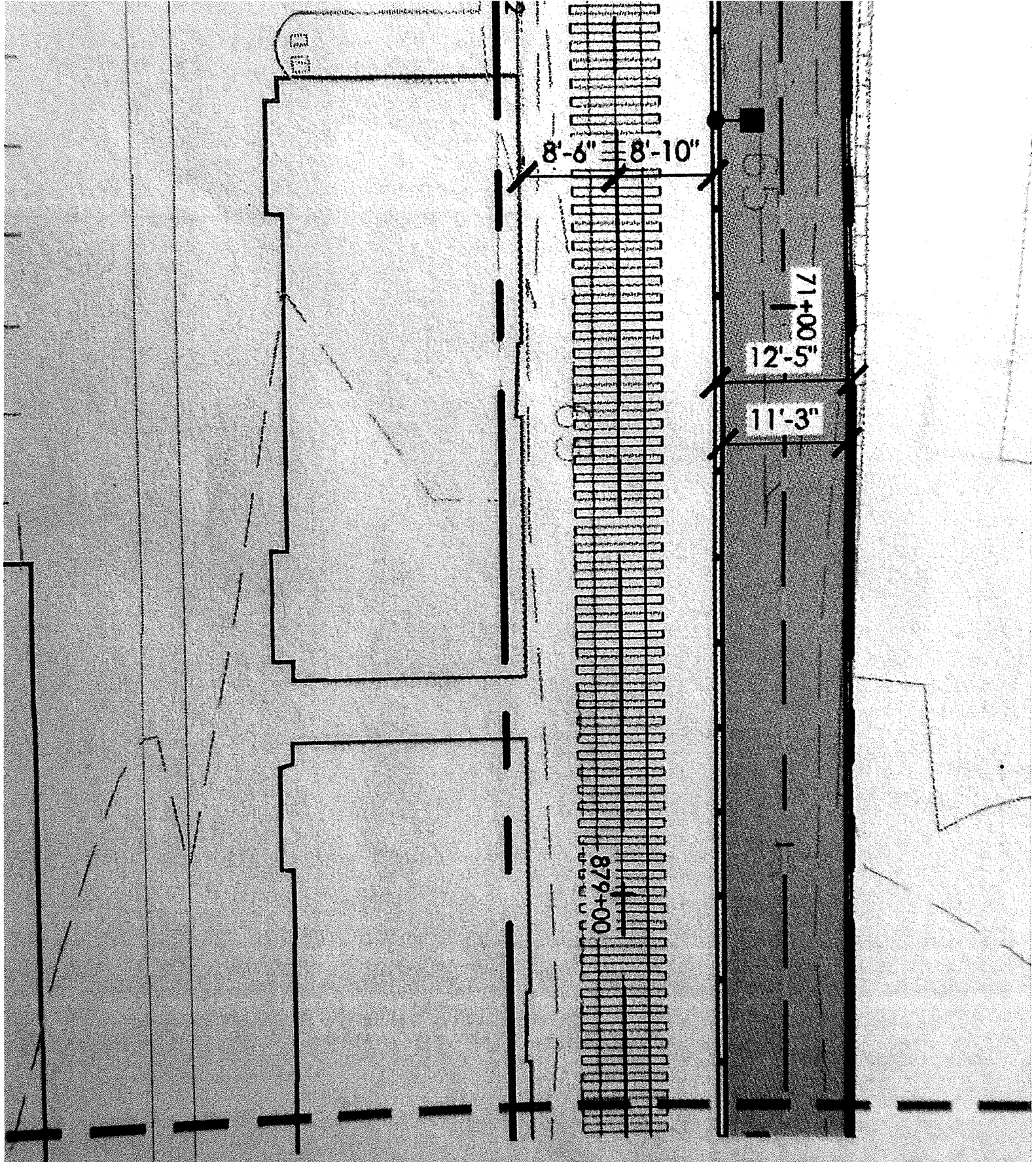


DETAIL 'E'
1"=60'



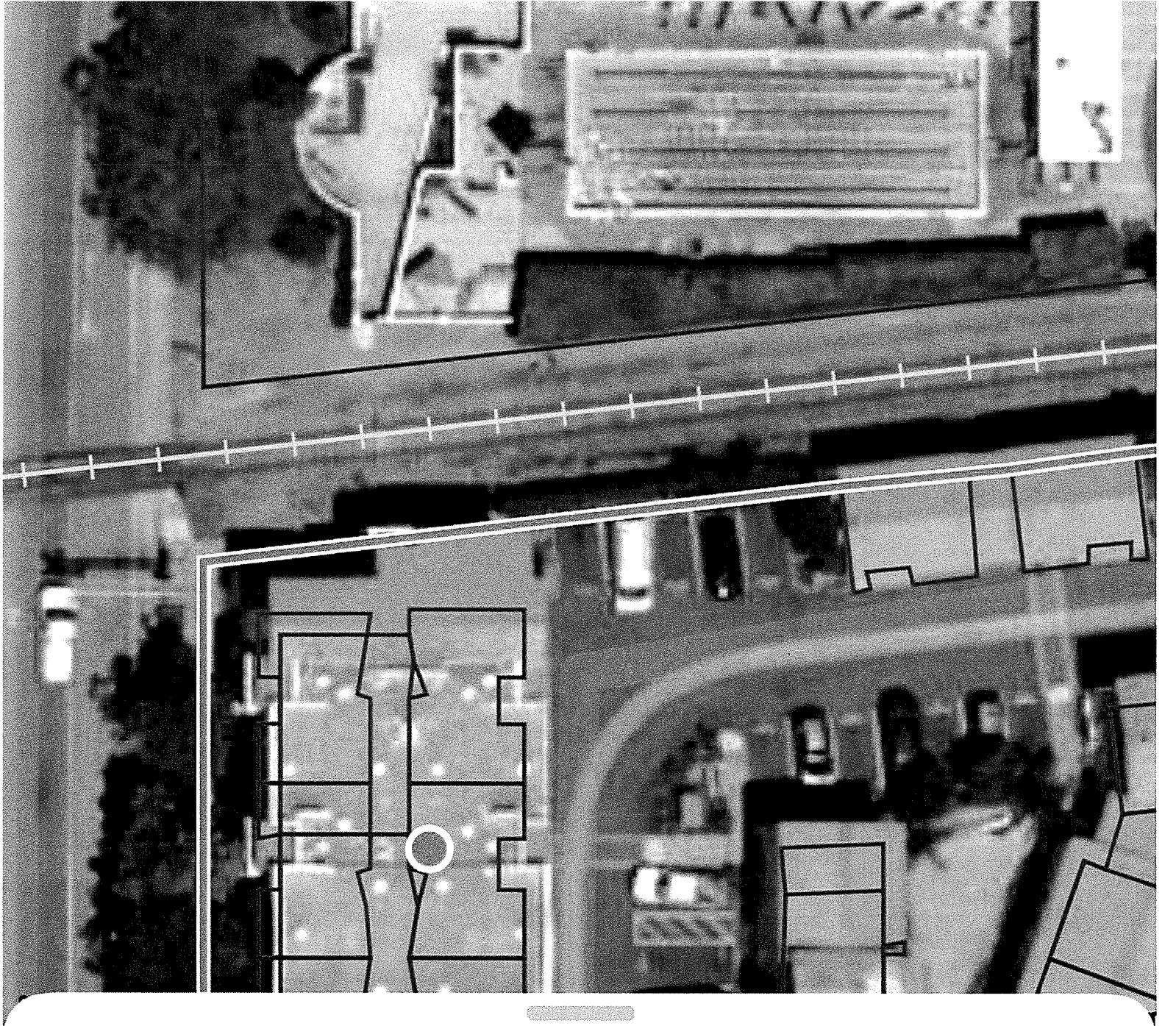
GRAPHIC SCALE

rrm design group
174 S. Hugobos St., Ste. 102 • San Luis Obispo, CA 93401
p. (805) 543-7744 • f. (805) 543-4609
www.rrmdesign.com



MATCHLINE, SEE SHE

N) REFINED SCHEMATIC PLANS -



CA Private Lands



CAPITOLA BEACH VILLAS OWNERS ASSOCIATION

Overview Hunt Unit Weather Content