

INDEX OF SHEETS

SHEET NO.	DESCRIPTION
1	TITLE SHEET
2	PLAN VIEW
3	WALL PROFILE
4	TYPICAL SECTION & DETAILS
5	EROSION CONTROL & REVEGETATION

GENERAL NOTES

1. ALL CONSTRUCTION SHALL CONFORM TO THE COUNTY OF SANTA CRUZ DESIGN CRITERIA, THE STATE STANDARD PLANS AND THE APPLICABLE PROVISIONS OF THE STATE STANDARD SPECIFICATIONS.
2. THERE SHALL BE NO CHANGES IN THE APPROVED IMPROVEMENT PLANS WITHOUT PRIOR APPROVAL BY THE SANTA CRUZ COUNTY DEPARTMENT OF PUBLIC WORKS.
3. PLEASE CALL "UNDERGROUND SERVICE ALERT (USA) AT 811 OR 800-227-7160 BEFORE DIGGING.
4. THE ENGINEER PREPARING THESE PLANS WILL NOT BE RESPONSIBLE FOR, OR LIABLE FOR, UNAUTHORIZED CHANGES TO OR USES OF THE PROJECTS NOT LISTED IN THE PLANS MUST BE APPROVED BY TRANSPORTATION ENGINEERING.
5. THE CONSTRUCTION CONTRACTOR AGREES THAT IN ACCORDANCE WITH GENERALLY ACCEPTED CONSTRUCTION PRACTICES, CONSTRUCTION SHALL BE THE RESPONSIBILITY OF THE CONTRACTOR. THE CONTRACTOR SHALL BE RESPONSIBLE FOR ALL SITE CONDITIONS DURING THE COURSE OF CONSTRUCTION OF THE PROJECT, INCLUDING SAFETY OF ALL PERSONS AND PROPERTY; THAT THIS REQUIREMENT SHALL BE MADE TO APPLY CONTINUOUSLY AND NOT BE LIMITED TO NORMAL WORKING HOURS, AND CONSTRUCTION CONTRACTOR FURTHER AGREES TO DEFEND, INDEMNIFY AND HOLD HARMLESS THE COUNTY OF SANTA CRUZ, ANY AND ALL LIABILITY, REAL OR ALLEGED, IN CONNECTION WITH THE PERFORMANCE OF WORK ON THIS PROJECT, EXCEPT LIABILITY ARISING FROM THE SOLE NEGLIGENCE OF DESIGN PROFESSIONAL.
6. THE CONTRACTOR SHALL POSSESS A CLASS "W" LICENSE AT THE TIME THE CONTRACT IS AWARDED.

ABBREVIATIONS

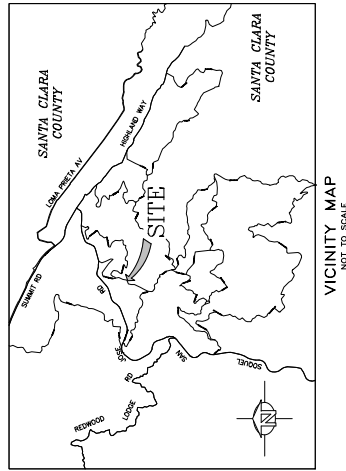
AB	ADJACENT BASE	KIP	1000 POUNDS FORCE
AC	ASPHALT CONCRETE	MBR	METRIC
AD	ASSASSIN'S PARCEL NUMBER	N	NORTH
AE	ADJACENT	NC	NORTH CAROLINA
AF	ADJACENT	OH	OHIO
AG	ADJACENT	O.C.	OVERHEAD
AH	ADJACENT	PA	PACIFIC
AI	ADJACENT	PM	POST MILE
AJ	ADJACENT	PT	POINT
AK	ADJACENT	PC	POLY VINYL CHLORIDE
AL	ADJACENT	REIN	REINFORCED
AM	ADJACENT	R/W	RIGHT OF WAY
AN	ADJACENT	S	SOUTH
AO	ADJACENT	SECTION	SECTION
AP	ADJACENT	S.S.	SANDSTONE
AQ	ADJACENT	STA	STATION
AR	ADJACENT	TYP	TYPICAL
AS	ADJACENT	UNB	UNBONDED
AT	ADJACENT	W	WITH
AV	ADJACENT	W/	WITH
AW	ADJACENT	W/	WITH
AX	ADJACENT	1ST	1ST
AY	ADJACENT	C	CONCRETE
AZ	ADJACENT	W/	WITH
BA	ADJACENT	W/	WITH
BB	ADJACENT	W/	WITH
BC	ADJACENT	W/	WITH
BD	ADJACENT	W/	WITH
BE	ADJACENT	W/	WITH
BF	ADJACENT	W/	WITH
BG	ADJACENT	W/	WITH
BH	ADJACENT	W/	WITH
BI	ADJACENT	W/	WITH
BJ	ADJACENT	W/	WITH
BK	ADJACENT	W/	WITH
BL	ADJACENT	W/	WITH
BM	ADJACENT	W/	WITH
BN	ADJACENT	W/	WITH
BO	ADJACENT	W/	WITH
BP	ADJACENT	W/	WITH
BQ	ADJACENT	W/	WITH
BR	ADJACENT	W/	WITH
BS	ADJACENT	W/	WITH
BT	ADJACENT	W/	WITH
BU	ADJACENT	W/	WITH
BV	ADJACENT	W/	WITH
BW	ADJACENT	W/	WITH
BX	ADJACENT	W/	WITH
BY	ADJACENT	W/	WITH
BZ	ADJACENT	W/	WITH
CA	ADJACENT	W/	WITH
CB	ADJACENT	W/	WITH
CC	ADJACENT	W/	WITH
CD	ADJACENT	W/	WITH
CE	ADJACENT	W/	WITH
CF	ADJACENT	W/	WITH
CG	ADJACENT	W/	WITH
CH	ADJACENT	W/	WITH
CI	ADJACENT	W/	WITH
CJ	ADJACENT	W/	WITH
CK	ADJACENT	W/	WITH
CL	ADJACENT	W/	WITH
CM	ADJACENT	W/	WITH
CN	ADJACENT	W/	WITH
CO	ADJACENT	W/	WITH
CP	ADJACENT	W/	WITH
CQ	ADJACENT	W/	WITH
CR	ADJACENT	W/	WITH
CS	ADJACENT	W/	WITH
CT	ADJACENT	W/	WITH
CU	ADJACENT	W/	WITH
CV	ADJACENT	W/	WITH
CW	ADJACENT	W/	WITH
CX	ADJACENT	W/	WITH
CY	ADJACENT	W/	WITH
CZ	ADJACENT	W/	WITH
DA	ADJACENT	W/	WITH
DB	ADJACENT	W/	WITH
DC	ADJACENT	W/	WITH
DD	ADJACENT	W/	WITH
DE	ADJACENT	W/	WITH
DF	ADJACENT	W/	WITH
DG	ADJACENT	W/	WITH
DH	ADJACENT	W/	WITH
DI	ADJACENT	W/	WITH
DJ	ADJACENT	W/	WITH
DK	ADJACENT	W/	WITH
DL	ADJACENT	W/	WITH
DM	ADJACENT	W/	WITH
DN	ADJACENT	W/	WITH
DO	ADJACENT	W/	WITH
DP	ADJACENT	W/	WITH
DQ	ADJACENT	W/	WITH
DR	ADJACENT	W/	WITH
DS	ADJACENT	W/	WITH
DT	ADJACENT	W/	WITH
DU	ADJACENT	W/	WITH
DV	ADJACENT	W/	WITH
DW	ADJACENT	W/	WITH
DX	ADJACENT	W/	WITH
DY	ADJACENT	W/	WITH
DZ	ADJACENT	W/	WITH
EA	ADJACENT	W/	WITH
EB	ADJACENT	W/	WITH
EC	ADJACENT	W/	WITH
ED	ADJACENT	W/	WITH
EE	ADJACENT	W/	WITH
EF	ADJACENT	W/	WITH
EG	ADJACENT	W/	WITH
EH	ADJACENT	W/	WITH
EI	ADJACENT	W/	WITH
EJ	ADJACENT	W/	WITH
EK	ADJACENT	W/	WITH
EL	ADJACENT	W/	WITH
EM	ADJACENT	W/	WITH
EN	ADJACENT	W/	WITH
EO	ADJACENT	W/	WITH
EP	ADJACENT	W/	WITH
EQ	ADJACENT	W/	WITH
ER	ADJACENT	W/	WITH
ES	ADJACENT	W/	WITH
ET	ADJACENT	W/	WITH
EU	ADJACENT	W/	WITH
EV	ADJACENT	W/	WITH
EW	ADJACENT	W/	WITH
EX	ADJACENT	W/	WITH
EY	ADJACENT	W/	WITH
EZ	ADJACENT	W/	WITH
FA	ADJACENT	W/	WITH
FB	ADJACENT	W/	WITH
FC	ADJACENT	W/	WITH
FD	ADJACENT	W/	WITH
FE	ADJACENT	W/	WITH
FF	ADJACENT	W/	WITH
FG	ADJACENT	W/	WITH
FH	ADJACENT	W/	WITH
FI	ADJACENT	W/	WITH
FJ	ADJACENT	W/	WITH
FK	ADJACENT	W/	WITH
FL	ADJACENT	W/	WITH
FM	ADJACENT	W/	WITH
FN	ADJACENT	W/	WITH
FO	ADJACENT	W/	WITH
FP	ADJACENT	W/	WITH
FO	ADJACENT	W/	WITH
FR	ADJACENT	W/	WITH
FS	ADJACENT	W/	WITH
FT	ADJACENT	W/	WITH
FU	ADJACENT	W/	WITH
FV	ADJACENT	W/	WITH
FW	ADJACENT	W/	WITH
FX	ADJACENT	W/	WITH
FY	ADJACENT	W/	WITH
FZ	ADJACENT	W/	WITH
GA	ADJACENT	W/	WITH
GB	ADJACENT	W/	WITH
GC	ADJACENT	W/	WITH
GD	ADJACENT	W/	WITH
GE	ADJACENT	W/	WITH
GF	ADJACENT	W/	WITH
GG	ADJACENT	W/	WITH
GH	ADJACENT	W/	WITH
GI	ADJACENT	W/	WITH
GJ	ADJACENT	W/	WITH
GK	ADJACENT	W/	WITH
GL	ADJACENT	W/	WITH
GM	ADJACENT	W/	WITH
GN	ADJACENT	W/	WITH
GO	ADJACENT	W/	WITH
GP	ADJACENT	W/	WITH
GQ	ADJACENT	W/	WITH
GR	ADJACENT	W/	WITH
GS	ADJACENT	W/	WITH
GT	ADJACENT	W/	WITH
GU	ADJACENT	W/	WITH
GV	ADJACENT	W/	WITH
GW	ADJACENT	W/	WITH
GX	ADJACENT	W/	WITH
GY	ADJACENT	W/	WITH
GZ	ADJACENT	W/	WITH
HA	ADJACENT	W/	WITH
HB	ADJACENT	W/	WITH
HC	ADJACENT	W/	WITH
HD	ADJACENT	W/	WITH
HE	ADJACENT	W/	WITH
HF	ADJACENT	W/	WITH
HG	ADJACENT	W/	WITH
HH	ADJACENT	W/	WITH
HI	ADJACENT	W/	WITH
HJ	ADJACENT	W/	WITH
HK	ADJACENT	W/	WITH
HL	ADJACENT	W/	WITH
HM	ADJACENT	W/	WITH
HN	ADJACENT	W/	WITH
HO	ADJACENT	W/	WITH
HP	ADJACENT	W/	WITH
HQ	ADJACENT	W/	WITH
HR	ADJACENT	W/	WITH
HS	ADJACENT	W/	WITH
HT	ADJACENT	W/	WITH
HU	ADJACENT	W/	WITH
HV	ADJACENT	W/	WITH
HW	ADJACENT	W/	WITH
HX	ADJACENT	W/	WITH
HY	ADJACENT	W/	WITH
HZ	ADJACENT	W/	WITH
IA	ADJACENT	W/	WITH
IB	ADJACENT	W/	WITH
IC	ADJACENT	W/	WITH
ID	ADJACENT	W/	WITH
IE	ADJACENT	W/	WITH
IF	ADJACENT	W/	WITH
IG	ADJACENT	W/	WITH
IH	ADJACENT	W/	WITH
II	ADJACENT	W/	WITH
IJ	ADJACENT	W/	WITH
IK	ADJACENT	W/	WITH
IL	ADJACENT	W/	WITH
IM	ADJACENT	W/	WITH
IN	ADJACENT	W/	WITH
IO	ADJACENT	W/	WITH
IP	ADJACENT	W/	WITH
IQ	ADJACENT	W/	WITH
IR	ADJACENT	W/	WITH
IS	ADJACENT	W/	WITH
IT	ADJACENT	W/	WITH
IU	ADJACENT	W/	WITH
IV	ADJACENT	W/	WITH
IW	ADJACENT	W/	WITH
IX	ADJACENT	W/	WITH
IY	ADJACENT	W/	WITH
IZ	ADJACENT	W/	WITH
JA	ADJACENT	W/	WITH
JB	ADJACENT	W/	WITH
JC	ADJACENT	W/	WITH
JD	ADJACENT	W/	WITH
JE	ADJACENT	W/	WITH
JF	ADJACENT	W/	WITH
JG	ADJACENT	W/	WITH
JH	ADJACENT	W/	WITH
JI	ADJACENT	W/	WITH
JJ	ADJACENT	W/	WITH
JK	ADJACENT	W/	WITH
JL	ADJACENT	W/	WITH
JM	ADJACENT	W/	WITH
JN	ADJACENT	W/	WITH
JO	ADJACENT	W/	WITH
JP	ADJACENT	W/	WITH
JQ	ADJACENT	W/	WITH
JR	ADJACENT	W/	WITH
JS	ADJACENT	W/	WITH
JT	ADJACENT	W/	WITH
JU	ADJACENT	W/	WITH
JV	ADJACENT	W/	WITH
JW	ADJACENT	W/	WITH
JX	ADJACENT	W/	WITH
JY	ADJACENT	W/	WITH
JZ	ADJACENT	W/	WITH
KA	ADJACENT	W/	WITH
KB	ADJACENT	W/	WITH
KC	ADJACENT	W/	WITH
KD	ADJACENT	W/	WITH
KE	ADJACENT	W/	WITH
KF	ADJACENT	W/	WITH
KG	ADJACENT	W/	WITH
KH	ADJACENT	W/	WITH
KI	ADJACENT	W/	WITH
KJ	ADJACENT	W/	WITH
KK	ADJACENT	W/	WITH
KL	ADJACENT	W/	WITH
KM	ADJACENT	W/	WITH
KN	ADJACENT	W/	WITH
KO	ADJACENT	W/	WITH
KP	ADJACENT	W/	WITH
KQ	ADJACENT	W/	WITH
KR	ADJACENT	W/	WITH
KS	ADJACENT	W/	WITH
KT	ADJACENT	W/	WITH
KU	ADJACENT	W/	WITH
KV	ADJACENT	W/	WITH
KW	ADJACENT	W/	WITH
KX	ADJACENT	W/	WITH
KY	ADJACENT	W/	WITH
KZ	ADJACENT	W/	WITH
LA	ADJACENT	W/	WITH
LB	ADJACENT	W/	WITH
LC	ADJACENT	W/	WITH
LD	ADJACENT	W/	WITH
LE	ADJACENT	W/	WITH
LF	ADJACENT	W/	WITH
LG	ADJACENT	W/	WITH
LH	ADJACENT	W/	WITH
LI	ADJACENT	W/	WITH
LJ	ADJACENT	W/	WITH
LK	ADJACENT	W/	WITH
LL	ADJACENT	W/	WITH
LM	ADJACENT	W/	WITH
LN	ADJACENT	W/	WITH
LO	ADJACENT	W/	WITH
LP	ADJACENT	W/	WITH
LQ	ADJACENT	W/	WITH
LR	ADJACENT	W/	WITH
LS	ADJACENT	W/	WITH
LT	ADJACENT	W/	WITH
LU	ADJACENT	W/	WITH
LV	ADJACENT	W/	WITH
LW	ADJACENT	W/	WITH
LX	ADJACENT	W/	WITH
LY	ADJACENT	W/	WITH
LZ	ADJACENT	W/	WITH
MA	ADJACENT	W/	WITH
MB	ADJACENT	W/	WITH
MC	ADJACENT	W/	WITH
MD	ADJACENT	W/	WITH
ME	ADJACENT	W/	WITH
MF	ADJACENT	W/	WITH
MG	ADJACENT	W/	WITH
MH	ADJACENT	W/	WITH
MI	ADJACENT	W/	WITH
MJ	ADJACENT	W/	WITH
MK	ADJACENT	W/	WITH
ML	ADJACENT	W/	WITH
MM	ADJACENT	W/	WITH
MN	ADJACENT	W/	WITH
MO	ADJACENT	W/	WITH
MP	ADJACENT	W/	WITH
MQ	ADJACENT	W/	WITH
MR	ADJACENT	W/	WITH
MS	ADJACENT	W/	WITH
MT	ADJACENT	W/	WITH
MU	ADJACENT	W/	WITH
MV	ADJACENT	W/	WITH
MW	ADJACENT	W/	WITH
MX	ADJACENT	W/	WITH
MY	ADJACENT	W/	WITH
MZ	ADJACENT	W/	WITH
NA	ADJACENT	W/	WITH
NB	ADJACENT	W/	WITH
NC	ADJACENT	W/	WITH
ND	ADJACENT	W/	WITH
NE	ADJACENT	W/	WITH
NF	ADJACENT	W/	WITH
NG	ADJACENT	W/	WITH
NH	ADJACENT	W/	WITH
NI	ADJACENT	W/	WITH
NJ	ADJACENT	W/	WITH
NK	ADJACENT	W/	WITH
NL	ADJACENT	W/	WITH
NM	ADJACENT	W/	WITH
NN	ADJACENT	W/	WITH
NO	ADJACENT	W/	WITH
NP	ADJACENT	W/	WITH
NQ	ADJACENT	W/	WITH
NR	ADJACENT	W/	WITH
NS	ADJACENT	W/	WITH
NT	ADJACENT	W/	WITH
NU	ADJACENT	W/	WITH
NV	ADJACENT	W/	WITH
NW	ADJACENT	W/	WITH
NX	ADJACENT	W/	WITH
NY	ADJACENT	W/	WITH
NZ	ADJACENT	W/	WITH
OA	ADJACENT	W/	WITH
OB	ADJACENT	W/	WITH
OC	ADJACENT	W/	WITH
OD	ADJACENT	W/	WITH
OE	ADJACENT	W/	WITH
OF	ADJACENT	W/	WITH
OG	ADJACENT	W/	WITH
OH	ADJACENT	W/	WITH
OI	ADJACENT	W/	WITH
OJ	ADJACENT	W/	WITH
OK	ADJACENT	W/	WITH
OL	ADJACENT	W/	WITH
OM	ADJACENT	W/	WITH
ON	ADJACENT	W/	WITH
OO	ADJACENT	W/	WITH
OP	ADJACENT	W/	WITH
OQ	ADJACENT	W/	WITH
OR	ADJACENT	W/	WITH
OS	ADJACENT	W/	WITH
OT	ADJACENT	W/	WITH
OU	ADJACENT	W/	WITH
OV	ADJACENT	W/	WITH
OW	ADJACENT	W/	WITH
OX	ADJACENT	W/	WITH
OY			

COUNTY OF SANTA CRUZ
DEPARTMENT OF PUBLIC WORKS

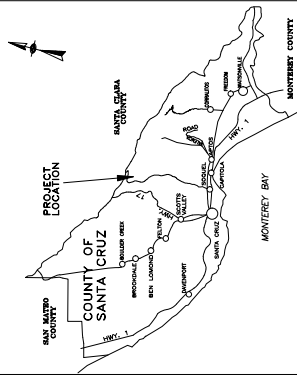
PROJECT PLANS FOR CONSTRUCTION ON

MILLER CUTOFF RD PM 0.49
STORM DAMAGE REPAIR PROJECT
FEMA Project No. 00459(770)
Disaster No. FEMA-4301-DR-CA

To be supplemented by CalTrans Standard Plans dated 2024



DIST	COUNTY	ROUTE	POST MILE OF PROJECT	SHEET No.	TOTAL SHEETS
01	Scr		P.M. 0.49	1	5



LOCATION MAP



DocuSigned by:
Grg Jones
3E4450EEC32A79...
Design Engineer
Grg Jones

DocuSigned by:
Joel LaLaguna
F9ED8BC84210459...

DocuSigned by:
598D6EFC20AAA48
Assistant Director of Public Works
Transportation Division
Steve Wiesner
2/5/2025

Signed by: Matt Machado
AT4C42C-A4428430
Director of Public Works
Matthew J. Machado

Chair, Board of Supervisors

Date approved by Board of Supervisors

County Job No.	P40684
----------------	--------

105016

Reviewed by:
Carisa Duran Construction Engineer

2/4/2025

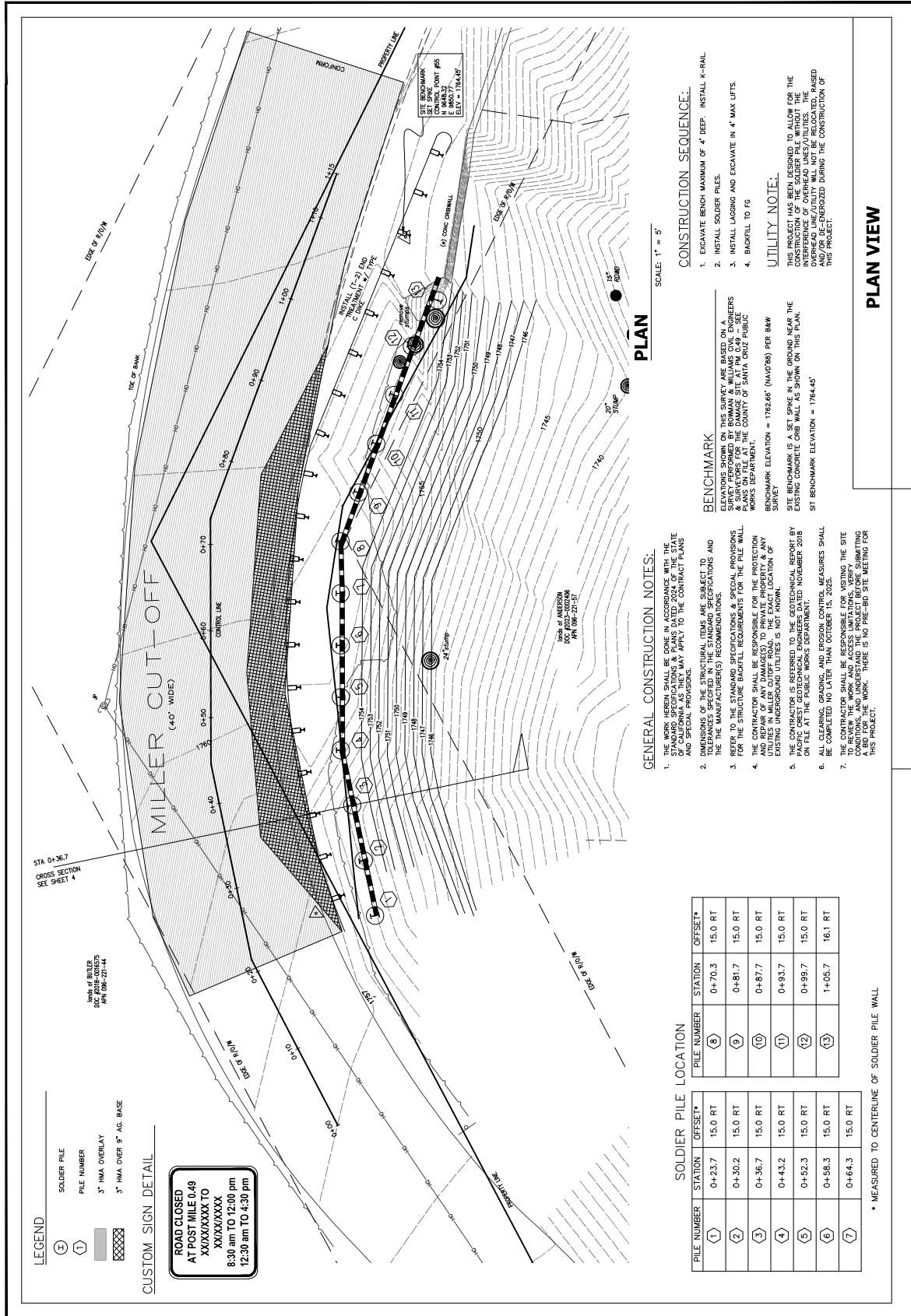
DocuSigned by:
Jef

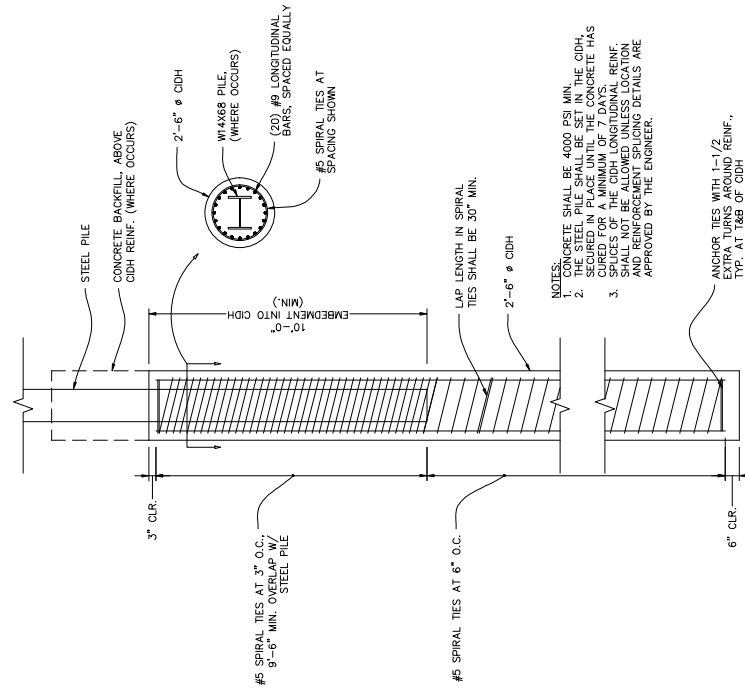
Reviewed by:
Alex Sandoval Road Superintendent

1/30/2025

DocuSigned by:
By Mte
C7D54E272E-1749D

Reviewed by:
Greg Martin
Traffic Engineer





CIDH DETAILS
SCALE: 1" = 2'

SCALE: 1" = 2'

SECTION VIEW @ 0+36.7
SCALE: 1" = 5' HOR & VERT

SCALE: 1" = 5' HOR & VERT

TYPICAL SECTION & DETAILS

SHEET
4 of 5

458

DRAWN: GRJ

CHECKED: JSL

DATE: 12/6/24

SCALE: 1"=5'

JOB NO. P40684

OF SANTA CRUZ - DEPARTMENT OF PUBLIC WORKS	MILLER CUTOFF ROAD PM 0.49	STORM DAMAGE REPAIR PROJECT
--	----------------------------	-----------------------------

MILLER CUTOFF ROAD PM 0.49
STORM DAMAGE REPAIR PROJECT

STORM DAMAGE REPAIR PROJECT

GREG JONES

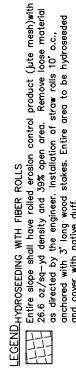
GREG JONES



REVISION

REVISION

BY



PLAN
SCALE: 1" = 4'

EROSION CONTROL SEED MIXTURE
Install erosion control seed mixture as described in the contract documents.

EROSION CONTROL NOTES:

1. PLACE TEMPORARY REINFORCING BAR (TIE) AS SPECIFIED IN THE CONTRACT SPECIFICATIONS.
2. PLACE REINFORCING BAR (TIE) AS SPECIFIED IN THE CONTRACT SPECIFICATIONS.
3. ALL OPERATIONS SHALL CONFORM TO REQUIREMENTS OF THE COUNTY DESIGN ORDINANCE. THE DESIGNED END RESULTS OF THE PROPOSED MEASURE SHALL BE AS SHOWN ON THE ATTACHED DRAWINGS.
4. ON ALL DETACHED SOIL AREAS, PLACE PROPOSED ROLLED REINFORCING STRAINING FABRIC (LUTE MESH) AND PIERCE BOLLS AS DESCRIBED IN THE CONTRACT SPECIFICATIONS.
5. ADDITIONAL MEASURES TO PREVENT EROSION SHALL BE USED TO PREVENT SOIL RUNOFF.
6. ADDITIONAL MEASURES TO PREVENT EROSION SHALL BE USED TO PREVENT SOIL RUNOFF.
7. ADDITIONAL MEASURES TO PREVENT EROSION SHALL BE USED TO PREVENT SOIL RUNOFF.
8. BETWEEN COTTON AND MAY 1, A DRAINAGE DITCH SHALL BE PROTECTED FROM EROSION OF ALL TIMES DURING CONSTRUCTION SOIL.
9. BETWEEN COTTON AND MAY 1, A DRAINAGE DITCH SHALL BE PROTECTED FROM EROSION OF ALL TIMES DURING CONSTRUCTION SOIL.
10. ON DETACHED SOIL AREAS, PLACE PROPOSED ROLLED REINFORCING STRAINING FABRIC (LUTE MESH) AND PIERCE BOLLS AS DESCRIBED IN THE CONTRACT SPECIFICATIONS.

NOTES:

- NOTES:
1. LOCATIONS FOR EROSION CONTROL INSTALLATIONS ARE APPROXIMATE AND SHOULD BE ADJUSTED IN THE FIELD AS NECESSARY AND APPROVED BY THE ENGINEER.
 2. ON ALL DISTURBED SOIL AREAS, PLACE HYDROSEED, ROLLED EROSION CONTROL FABRIC (JUTE MESH) AND FIBER ROLLS AS DESCRIBED IN THE CONTRACT DOCUMENTS.
 3. PLACE TEMPORARY REINFORCED SILT FENCE AS DESCRIBED IN THE CONTRACT DOCUMENTS.
 4. INSTALL CONTAINER PLANTS AS DESCRIBED IN THE CONTRACT DOCUMENTS.

EROSION CONTROL & REVEGETATION