



Santa Cruz County Fire Department



Fire Hazard Severity Zones

May 20th, 2025



HISTORY

1980



Panorama Fire burns 28,800 acres, destroying 325 structures and resulting in 4 fatalities in San Bernardino.

PRC 4201 mandates that CAL FIRE develop Fire Hazard Severity Zones.

1982

Fire Hazard Severity Zone maps are created.

1985

1991



Tunnel Fire burns 1,600 acres, destroying 2,900 structures and resulting in 25 fatalities in the Oakland Hills.

The "Bates Bill" calls for CAL FIRE to identify Very High Fire Hazard Severity Zones in LRA.

1992

CAL FIRE finalizes the Statewide FHSZ Model to include Very High FHSZ in LRA.

2007

2017



Tubbs Fire burns 36,810 acres, destroying 5,643 structures and resulting in 22 fatalities in Santa Rosa.

2018



Camp Fire burns 153,336 acres, destroying 18,804 structures and resulting in 85 fatalities in Paradise.

AB 642 and SB 63 require CAL FIRE to identify Moderate and High FHSZ in LRA.

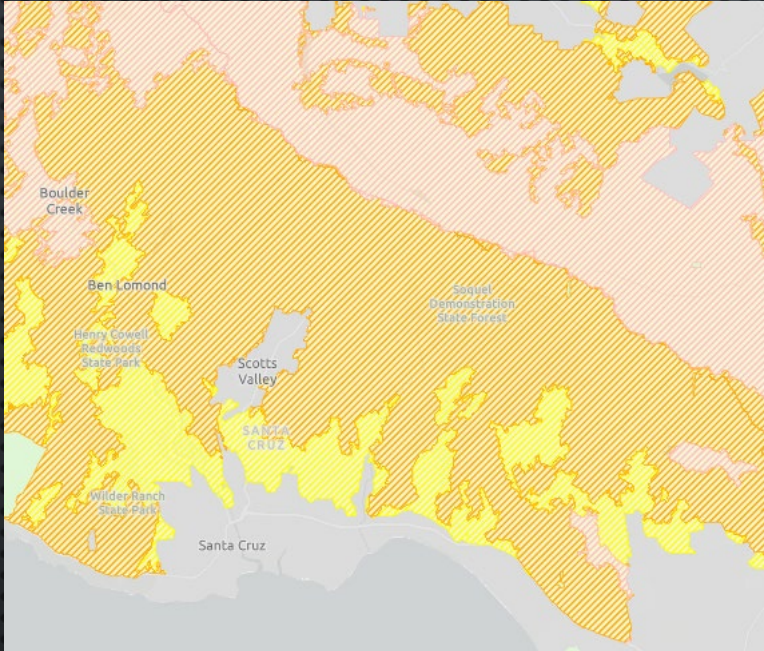
2021

AB 211 requires local agency to designate by ordinance Moderate and High FHSZ in LRA.

2022

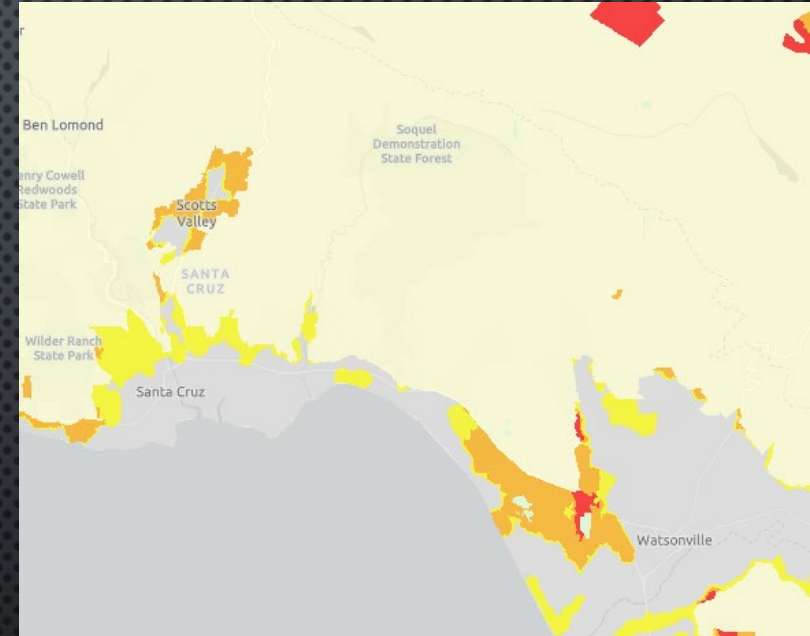


LRA vs. SRA



State Responsibility Area (SRA)

State has financial responsibility for wildland fire protection and prevention



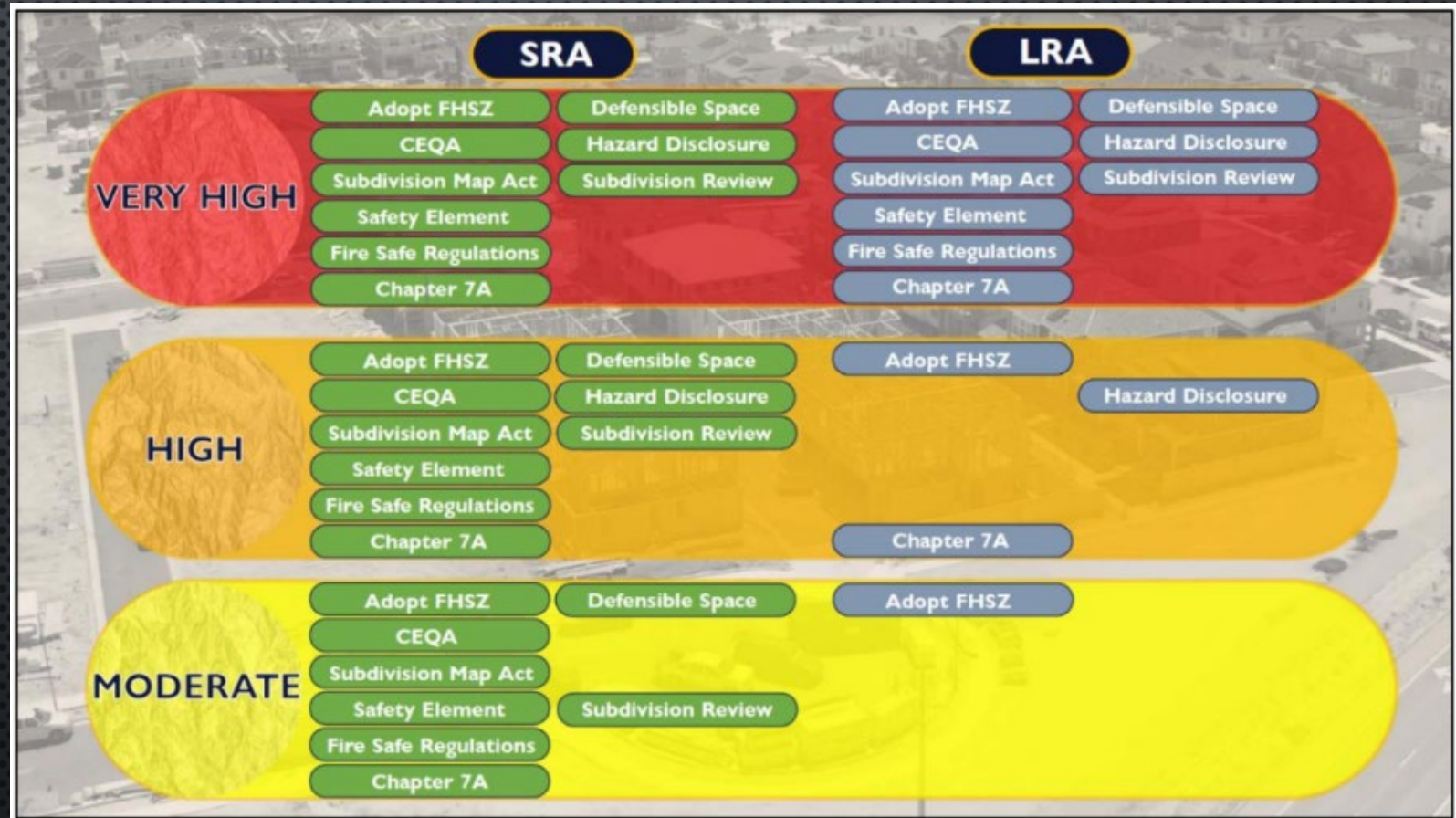
Local Responsibility Area (LRA)

Local Government has financial responsibility for wildland fire protection and prevention



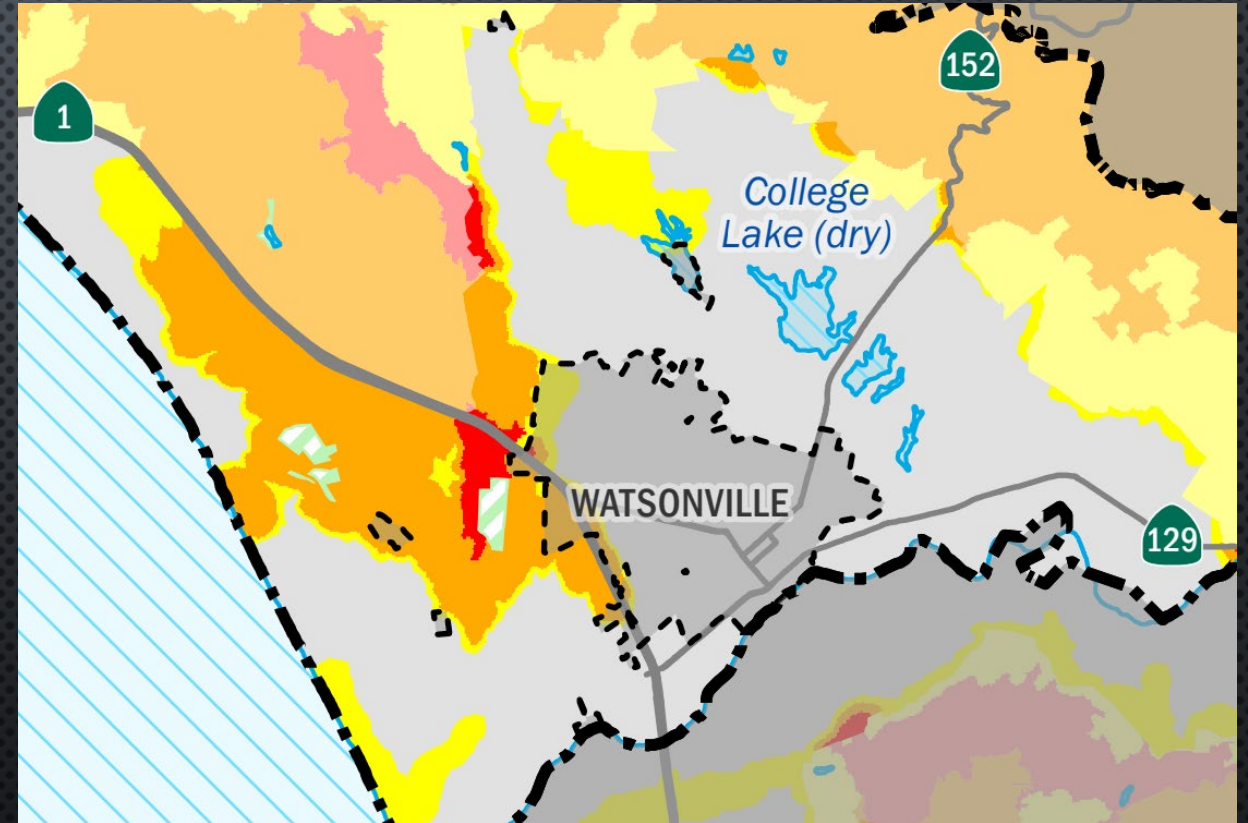
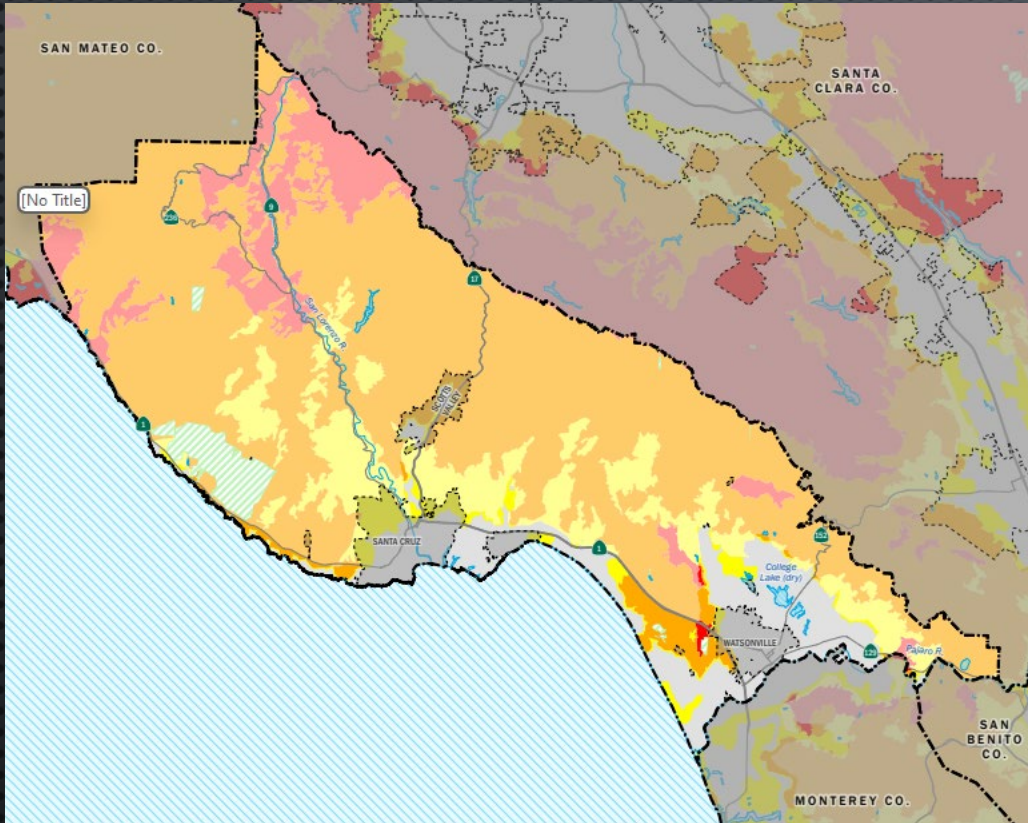
FIRE HAZARD SEVERITY ZONES

- **VERY HIGH**
- **HIGH**
- **MODERATE**





MAPS

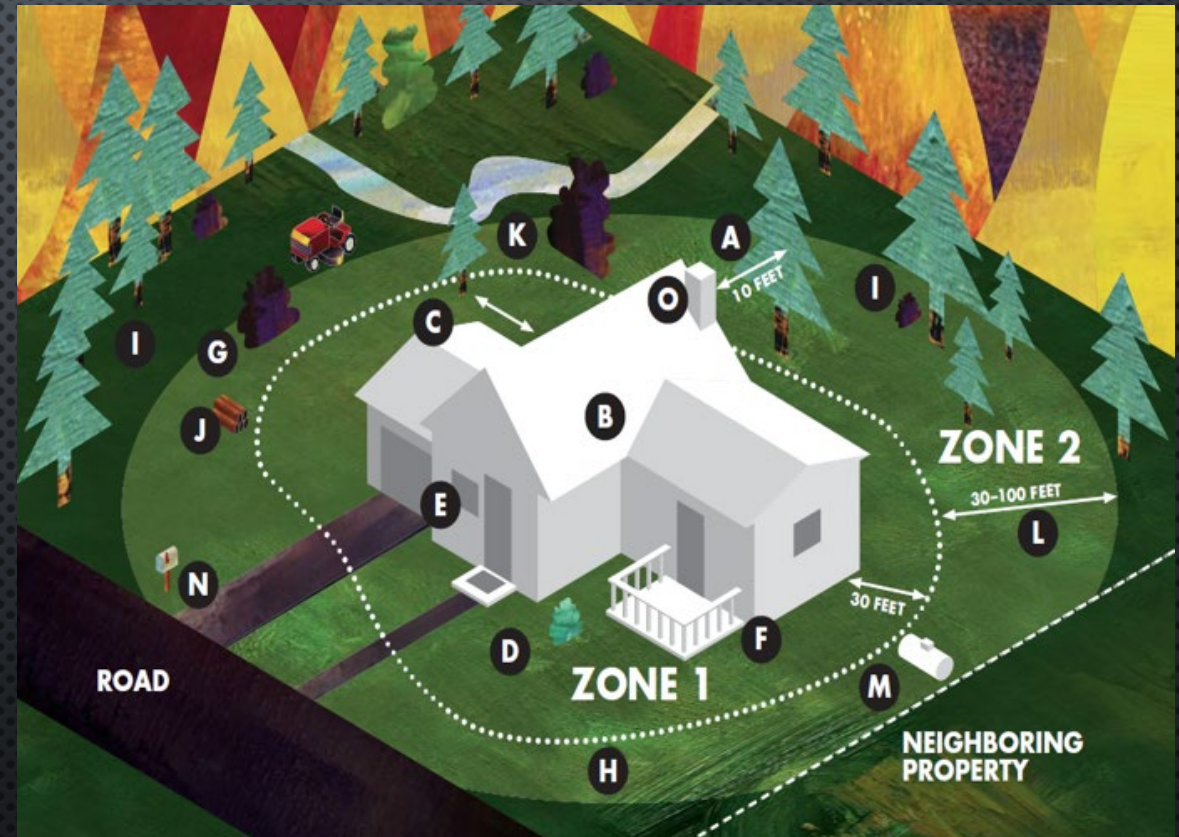




Remove woody materials/vegetation
Remove limbs from trees/large bushes

- Remove branches within 10' of chimney
- Remove or separate live ground cover
- Trim tree limbs 6-10' off ground
- Remove flammable vegetation near decks, balconies, stairs, etc.

Keep annual grasses below 4"
Remove all piles of dead vegetation
Work with neighbors to maintain

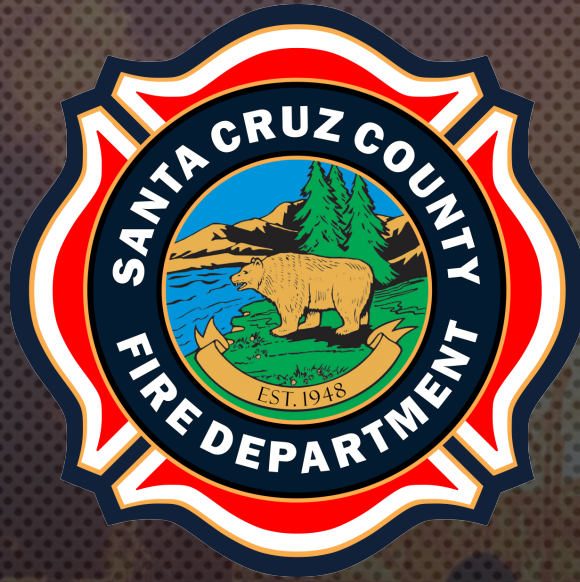




What we can do...

- Defensible Space
- Home Hardening
- FireSafe and FireWise
- Participate in evacuation drills and messaging
- Signup for CRUZAware
- Know your Zone





QUESTIONS?