

## INDEX OF SHEETS

SHEET NO.	DESCRIPTION
1	TITLE SHEET
2	PLAN VIEW
3	WALL PROFILE
4	TYPICAL SECTION & DETAILS
5	EROSION CONTROL & REVEGETATION

## GENERAL NOTES

1. ALL CONSTRUCTION SHALL CONFORM TO THE COUNTY OF SANTA CRUZ DESIGN CRITERIA, THE STATE STANDARD PLANS AND THE APPLICABLE PROVISIONS OF THE STATE STANDARD SPECIFICATIONS.
2. THERE SHALL BE NO CHANGES IN THE APPROVED IMPROVEMENT PLANS WITHOUT PRIOR APPROVAL BY THE SANTA CRUZ COUNTY DEPARTMENT OF PUBLIC WORKS.
3. PLACE CMT "UNDERGROUND SERVICE ALERT" (U.S.A.) AT R11 or 800-421-7860 BEFORE DOWNGRADE.
4. THE ENGINEER PREPARED THESE CHANGES WILL NOT BE RESPONSIBLE FOR OR LIABLE FOR, UNAUTHORIZED CHANGES TO OR USES OF THE PLANS. THE PLANS MUST BE APPROVED BY THE TRANSPORTATION ENGINEER.
5. THE CONSTRUCTION CONTRACTOR SHALL BE IN ACCORDANCE WITH THE REQUIREMENTS OF THE STANDARD SPECIFICATIONS. THE CONTRACTOR WILL BE REQUIRED TO ASSUME SOLE AND COMPLETE RESPONSIBILITY FOR JOB SITE CONDITIONS DURING THE COURSE OF CONSTRUCTION OF THE PROJECT, INCLUDING SAFETY OF ALL PERSONS AND PROPERTIES; THAT THIS REQUIREMENT SHALL BE MADE TO APPLY CONTINUOUSLY AND THAT THIS REQUIREMENT SHALL BE MAINTAINED THROUGHOUT THE CONSTRUCTION CONTRACT PERIOD UPON TO BEING, AND ALL LIABILITY, REAL OR ALLEGED, IN CONNECTION WITH THE PERFORMANCE OF WORK ON THE PROJECT, EXCEPTING LIABILITY ARISING FROM THE SOLE NEGLIGENCE OF DESIGN PROFESSIONAL.
6. THE CONTRACTOR SHALL POSSESS A CLASS "X" LICENSE AT THE TIME THE CONTRACT IS AWARDED.

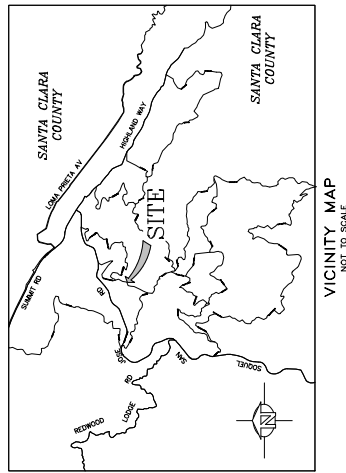
## ABBREVIATIONS

ADVERTISE	AG	KIP	1000 POUNDS FORCE
ASPHALT CONCRETE	AC	ASPH	STEAM GUARD RAIL
ASSASSIN'S PARCEL NUMBER	APN	PAR	NORTH
ASSIGNMENT	AS	ASS	MINIMUM
BOTTOM CONCRETE PIER	BCP	CON	ON CENTER
CEILING LINE	CL	CEI	OVERHEAD
CONCRETE	CONC	CON	PACIFIC GAS AND ELECTRIC
CONNECTION	CONN	CON	POST MILE
CONTROL POINT	CP	CON	POINT
DIAMETER	DI	CON	PVC VINYL CHLORIDE
EXISTING	EX	CON	REINFORCED
EACH	EA	CON	RIGHT OF WAY
ELEVATION	ELEV	CON	SOUTH
ENGINEER	ENG	CON	SECTION
EDGE OF PAVEMENT	EOP	CON	STONE
ESTIMATE	EST	CON	STATION
EXCAVATION	EXCAV	CON	TYPICAL
FOUND	FOUN	CON	UNBONDED
FOOT, FEET	FT	CON	WITH
GENERAL	GEN	CON	W/
GRADE	GRADE	CON	W/
HEIGHT	HT	CON	PREST
INVERT	INT	CON	ST
JOINT	JOINT	CON	W/
POLE	POLE	CON	W/
UP	UP	CON	W/

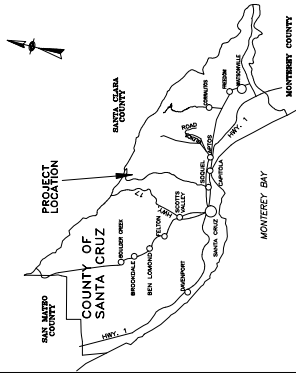
COUNTY OF SANTA CRUZ  
DEPARTMENT OF PUBLIC WORKS  
\_\_\_\_\_  
PROJECT PLANS FOR CONSTRUCTION ON

MILLER CUTOFF RD PM 0.47  
STORM DAMAGE REPAIR PROJECT  
CalOES State Disaster No. CDAA-2022-03  
Damage Survey Report (DSR) 4561

To be supplemented by CalTrans Standard Plans dated 2024



VICINITY MAP  
NOT TO SCALE



## LOCATION MAP

DIST	COUNTY	ROUTE	POST MILE OF PROJECT	SHEET No.	TOTAL SHEETS
01	ScR		P.M. 0.47	1	5



DocuSigned by:  
**Greg Jones**  
3E4450FFFC32479  
Design Engineer  
Greg Jones

1/14/2025

DocuSigned by:  
Joel LaCagna  
F9ED88C84210459  
Senior Design Engineer  
Joel LaCagna

1/23/2025

DocuSigned by:  
5B8D8EFC20AA4A8  
Assistant Director  
Transportation Division  
Steve Wiesner

2/5/2025

Signed by: Matt Machuga  
471C42FA44284B0  
Director of Public  
Matthew J. Machuga

2/6/2025

Chair, Board of Supervisors

Date approved by Board of Supervisors

County Job No.	P40684
----------------	--------

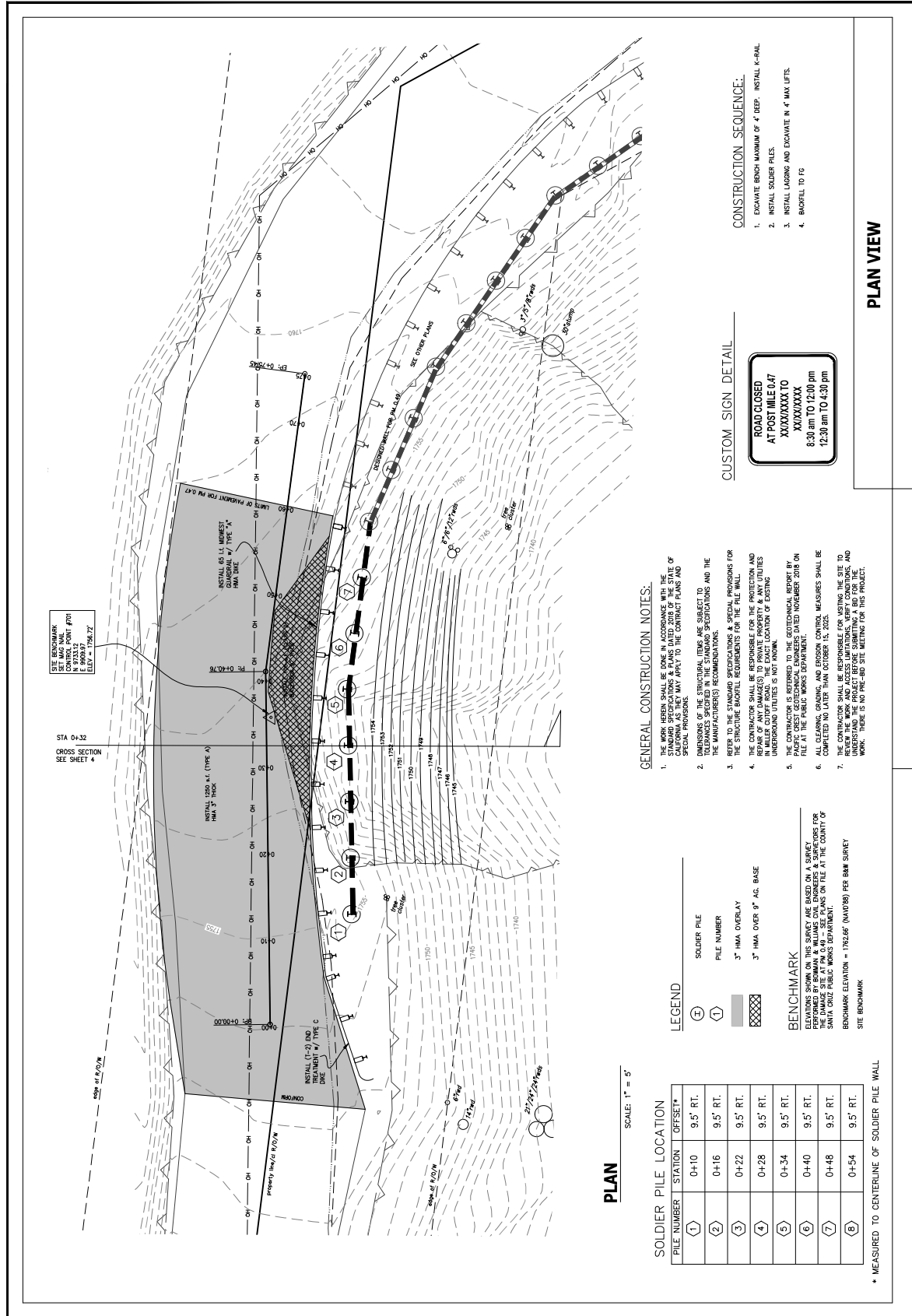
240684

Reviewed by:	 Greg Martin Traffic Engineer	Documented by:  Alex Sandoval Road Superintendent	Reviewed by: 1/30/2025
--------------	--	---	---------------------------

Reviewed by:
Alex Sandoval
Road Superintendent

Reviewed by:
Alex Sandoval
Road Superintendent

Reviewed by:
Alex Sandoval
Road Superintendent



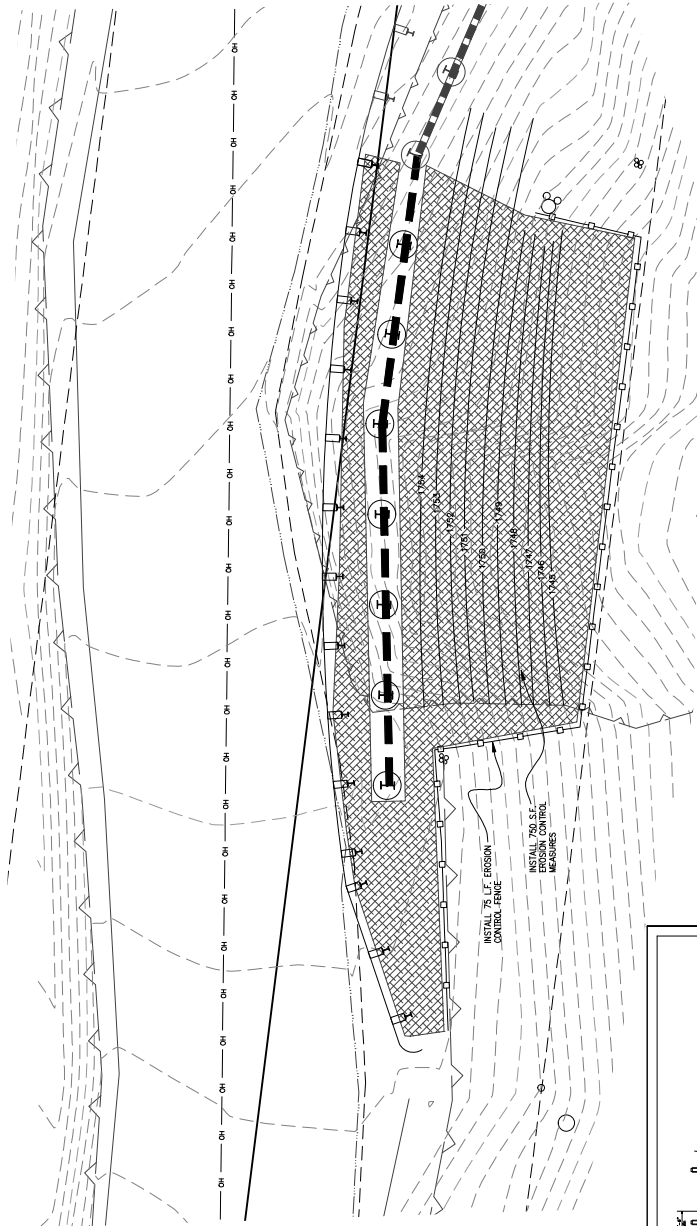
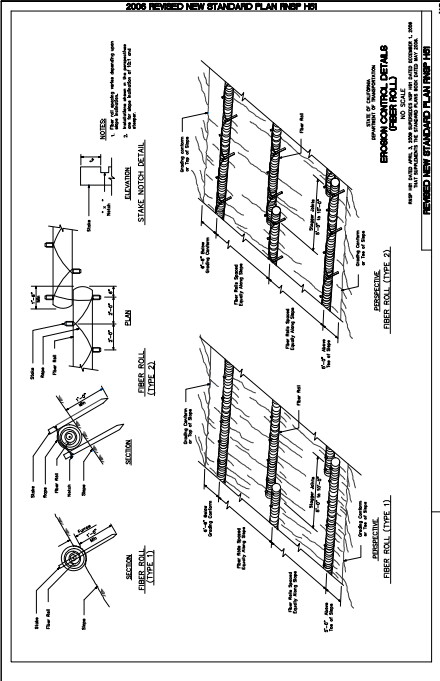




NOTE: LOCATIONS FOR EROSION CONTROL INSTALLATIONS ARE APPROXIMATE AND SHOULD BE NECESSARY AND APPROVED BY THE ENGINEER

**HYDROSEEDING WITH STRAW ROLLS**  
Entire slope shall have Geotextile blanket. Installation of straw rolls shall be in accordance with the following: Straw rolls shall alternate with Arroyo Willow (Salix Lasiolepis) 3' long pole cutting stakes 3' o.c. Entire area to be hydroseeded and cover with native dirt.  
Stake Labelings - Arroyo Willow / 60 pole cuttings

**EROSION CONTROL SEED MIXTURE**  
3 lbs. Vulpia microstachya - Three Weeks Fescue  
4 lbs. Trifolium pratense - Three Weeks Fescue  
20 lbs. Sterile Hybrid Wintergrass or barley



**LEGEND: HYDROSEEDING WITH FIBER ROLLS**  
Entire slope shall have rolled erosion control product (Jute mesh) with 26.6 oz/sq-yd density and 39% open area. Remove loose material as directed by the Engineer. The entire area shall be hydroseeded and cover with native dirt. Stakes. Entire area to be hydroseeded and cover with native dirt.

**EROSION CONTROL SEED MIXTURE**  
Erosion control seed mixture as described in the contract documents.

**EROSION CONTROL NOTES:**

1. PLACE TEMPORARY EROSION CONTROL MEASURES AS DESCRIBED IN THE CONTRACT DOCUMENTS.
2. ON ALL DISTURBED SOIL AREAS, PLACE HYDROSEEDING ROLLS, FIBER ROLLS, AND FIBER ROLLS AS DESCRIBED IN THE CONTRACT DOCUMENTS.
3. ALL OPERATIONS SHALL CONFORM TO REQUIREMENTS OF THE COUNTY EROSION CONTROL ORDINANCE. THE DESIGN AND RESULT OF THE PROPOSED MEASURE IS TO CONTROL EROSION AND TO PREVENT SEDIMENT TRANSPORT OFF THE SITE. IT IS THE CONTRACTOR'S RESPONSIBILITY TO SEE THAT ANY MEASURE IS MAINTAINED IN PLACE AND TO MAINTAIN THE MEASURE IN PLACE UNTIL THE EROSION CONTROL MEASURE IS NO LONGER NEEDED.
4. EROSION CONTROL MEASURES SHALL BE MAINTAINED UNTIL THE EROSION CONTROL MEASURE IS NO LONGER NEEDED.
5. PROTECTION SHALL CONSIST OF MULCHING AND/OR PLANTING OF NATIVE VEGETATION OF ADEQUATE DENSITY, BEFORE COMPLETION OF PROJECT. ANY EXPOSED SOIL ON DISTURBED SLOPES SHALL BE PERMANENTLY PROTECTED FROM EROSION.

**NOTES:**

1. LOCATIONS FOR EROSION CONTROL INSTALLATIONS ARE APPROXIMATE AND SHOULD BE NECESSARY AND APPROVED BY THE ENGINEER.
2. ON ALL DISTURBED SOIL AREAS, PLACE HYDROSEEDING ROLLS, FIBER ROLLS, AND FIBER ROLLS AS DESCRIBED IN THE CONTRACT DOCUMENTS.
3. EROSION CONTROL MEASURES SHALL BE MAINTAINED UNTIL THE EROSION CONTROL MEASURE IS NO LONGER NEEDED.
4. PROTECTION SHALL CONSIST OF MULCHING AND/OR PLANTING OF NATIVE VEGETATION OF ADEQUATE DENSITY, BEFORE COMPLETION OF PROJECT. ANY EXPOSED SOIL ON DISTURBED SLOPES SHALL BE PERMANENTLY PROTECTED FROM EROSION.

**EROSION CONTROL & REVEGETATION**