

42. AS THE BOARD OF DIRECTORS OF THE FREEDOM COUNTY SANITATION DISTRICT: Schedule a public hearing on May 6, 2025, at 9:00 am or thereafter, to consider adopting a resolution amending the Freedom County Sanitation District 2025-26 sewer service charges, and take related actions ()



County of Santa Cruz Board of Supervisors

Agenda Item Submittal

From: Community Development and Infrastructure

Subject: 2025-26 Sewer Service Charges for the Freedom County Sanitation District

Meeting Date: March 11, 2025

Formal Title: AS THE BOARD OF DIRECTORS OF THE FREEDOM COUNTY SANITATION DISTRICT: Schedule a public hearing on May 6, 2025, at 9:00 am or thereafter, to consider adopting a resolution amending the Freedom County Sanitation District 2025-26 sewer service charges, and take related actions

Recommended Actions

1. Schedule a public hearing for Tuesday, May 6, 2025, at 9:00 a.m. or thereafter, to consider adopting a resolution setting the 2025-26 sewer service charges;
2. Approve the Notice of Public Hearing and direct Freedom County Sanitation District staff to mail the notice of the date and time for the scheduled hearing to those required by Proposition 218; and
3. Direct the Clerk of the Board to publish the Notice of Public Hearing, in a newspaper of general circulation, once a week for two consecutive weeks prior to the date of the hearing, as required by Government Code Section 6066 and County Code Chapter 4.26.

Executive Summary

The proposed FY 2025-26 sewer service charges are presented, and a public hearing is required to be set. These charges have been developed by the Freedom County Sanitation District's revenue consultant and are set to be in proportion with the cost of service for each customer classification.

Discussion

Annually, the Freedom County Sanitation District (District) evaluates expected costs (operations and maintenance costs, needed capital outlays, debt service, etc.) and anticipated revenues. The District's revenue consultant, Hornberger Engineering, uses this evaluation to determine the upcoming fiscal year's sewer service charges necessary to fund the District. To implement the proposed charges, it is necessary to adopt a resolution. To adopt this resolution a public hearing must be held. Attached for the Board's approval are two Notices of Public Hearing for the proposed FY 2025-26 sewer service charges. One notice to be mailed to customers within the District, and the other to be published in the Santa Cruz Sentinel newspaper.

The proposed sewer service charges for FY 2025-26 are as follows:

<u>Type of Customer</u>	<u>Existing 2024/2025 Charges Per year</u>	<u>Proposed 2025/2026 Charges Per year</u>	<u>Proposed 2025/2026 Increase</u>
Single Family Residential	\$882.76	\$908.46	\$2.14/month
Multi-Family/Apartments	\$576.66	\$591.50	\$1.24/month
Mobile Homes	\$890.42	\$916.40	\$2.16/month

Commercial Facility Flat Rate	\$198.92	\$197.62	-\$0.11/month plus
Commercial (Per HCF)	\$7.84	\$8.12	\$0.02/HCF
Schools Flat Rate	\$198.92	\$197.62	-\$0.11/month plus
Schools (Per ADA)	\$18.90	\$19.57	\$0.06/ADA

HCF = Hundred Cubic Feet

ADA = Average Daily Attendance

The proposed service charges for FY 2025-26 reflect an overall increase of 2.9 percent. The largest contributor to this rate increase is the need for manhole and sewer main repairs; \$230,000 will be collected for these upgrades. Additionally, \$100,000 will be collected for reserves, as the District's account was depleted by an emergency repair in FY 2023-24. The District is responsible for a share of the City of Watsonville's treatment costs and capital improvements to the City's wastewater treatment plant which treats the District's wastewater. For FY 2025-26, the District's share is expected to be \$532,369 which is down 4.1percent from FY 2024-25.

The 2025-26 revenue study is attached for the Board's review.

Financial Impact

An overall increase in the sewer service charges of 2.9 percent is expected to result in \$1,634,000 of collected charges (GL Key 625130-41866).

Strategic Initiatives

Equity Framework - County Facilities & Infrastructure

Operational Plan - Operational Excellence

Submitted By:

Matt Machado

Recommended By:

Carlos J. Palacios, County Administrative Officer

Artificial Intelligence Acknowledgment:

Artificial Intelligence (AI) did not significantly contribute to the development of this agenda item.

FREEDOM COUNTY SANITATION DISTRICT

2025/26 REVENUE STUDY



January 2025

Hornberger Engineering
San Jose, California

INTRODUCTION

The Freedom County Sanitation District discharges wastewater into the City of Watsonville's treatment facilities through the use of capacity rights that it owns in that system. The construction of those treatment facilities was partially funded by Federal EPA and State Water Resources Control Board grants. The Clean Water Act of 1972 established the requirements of user charge systems for projects receiving EPA grants. Specific regulations were promulgated in Title 40 of the Code of Federal Regulations (CFR), Part 35. The State Water Resources Control Board has adopted Revenue Program Guidelines that are intended to assist public agencies in complying with the regulations for user charges. The District, as a subscribing agency of the Watsonville treatment system, is subject to these regulations.

The purpose of this revenue study is to update the District's fee structure, which has been in effect since July 1, 2024. The proposed fees will generate adequate funding for operation and maintenance of the collection system, treatment by the City of Watsonville, capital outlays, debt service and other miscellaneous expenses. The proposed fee structure complies with the Revenue Program Guidelines, including the requirement that fees be proportionate to the cost to provide service to each customer. The proposed fees are based on the customer wastewater characteristics of the Watsonville system and the policies of the other sanitation districts managed by Santa Cruz County. The study period for this revenue study is fiscal year 2025/26.

DISTRICT ORGANIZATION AND FACILITIES

The Freedom County Sanitation District was formed in 1958. It is governed by the Santa Cruz County Board of Supervisors acting as the Board of Directors for the District. The District is managed by the County Department of Public Works that also provides engineering, operation and maintenance and construction. Other administrative services are provided by appropriate County agencies.

Fees for sewer service are collected through the property tax bills of the District's customers. These are calculated by the Department of Public Works and entered on the tax bills by the Auditor-Controller's Office. Charges for commercial users are developed from the records of the City of Watsonville's Water Department.

The wastewater collection system operated by the District includes 10 pump stations and approximately 21 miles of sewers. It currently serves 1,323 single family dwellings, 364 multiple family dwelling units, 178 mobile homes, and 26 commercial and institutional users. Wastewater is discharged at various locations into the Watsonville transmission system for treatment and disposal.

The District owns capacity rights in the Watsonville Wastewater Treatment Plant as specified in a 1984 agreement between both agencies. The District's original capacity of 1.350 million gallons per day has been reduced to 0.711 million gallons per day since 1984 by a series of detachments. The District's share of capital outlay costs and operation and maintenance costs is also set forth in the agreement.

FEE DEVELOPMENT POLICIES

The policies used for development of the updated fees in the Freedom County Sanitation District are similar to those used by the Santa Cruz County Sanitation District. The goal is to have consistency in the allocation of costs and design of fees for all of the sanitation districts managed by the County Department of Public Works. The key policies used for the development of the District's fees are summarized below.

User Groups and Wastewater Strengths

The District's residential and commercial users are classified using the same groups as the City of Watsonville and the other agencies that discharge to the treatment system. Wastewater strengths assigned to those groups are also the same as adopted by the City. It is typical practice for tributary agencies in a regional system to utilize the same user groups and strengths as the lead agency. These groups and their strengths are listed in Table 1.

Table 1
User Groups and Wastewater Strengths

User Groups	BOD Strength (mg/l)	SS Strength (mg/l)
Single Family Residential	200	200
Multiple Family Residential	200	200
Mobile Home Residential	200	200
Other Businesses	200	200
Schools	200	200

Collection System Operation and Maintenance Cost Allocation

An estimated 20% of the collection system operation and maintenance costs are associated with trunk lines. These costs are allocated on the basis of flow. The remaining 80% of collection O&M costs are associated with small diameter lines. These costs are allocated equally among all users since they are caused primarily by the size of the system as opposed to the flow transported.

Source Control Costs

Source control is the program that involves sampling wastewater from commercial and institutional users for compliance with the District's discharge limitations and pretreatment program. This program benefits all customers and specifically non-residential customers. Accordingly, the cost of this program is split between these two groups. 65% of source control costs are allocated to all users on the basis of flow. The remaining 35% is all allocated equally among all non-residential users.

Inflow/Infiltration Costs

Inflow/infiltration (I/I) is extraneous flow that enters the collection system through cracks, poor joints, roof leaders, manhole covers and other sources. The costs associated with collection and treatment of I/I are allocated equally to all users. This recognizes that I/I is a community-wide responsibility that is related to system size and the number of users.

Commercial Fees

Commercial users are billed on the basis of a two-part fee structure that includes a flat yearly charge and a composite volume fee. The flat yearly charge recovers the costs of small diameter collection lines, 35% of the source control program and inflow/infiltration. The composite volume fee recovers all other District costs and is based on the BOD and SS concentrations shown in Table 1.

WASTEWATER LOADINGS

Residential

The number of single family and multiple family dwelling units in the District is based on the County's 2024/25 tax roll. Detachments from the District due to annexations by Watsonville have been accounted for in these totals.

The average residential wastewater discharges are based on a study of winter water usage for fiscal years 2014/15 through 2016/17. Water usage information was obtained from the City of Watsonville. The average single family, multiple family and mobile home discharges for the 2025/26 rates are 200, 120 and 202 gallons per day, respectively. Residential discharges are based on water usage during the winter months when outside irrigation is nominal. Residential wastewater strengths are 200 mg/l for BOD and 200 mg/l for suspended solids (SS).

Commercial and Institutional

The District obtains the annual water usage for each commercial account from the City of Watsonville. Calendar year water consumption is used to calculate each commercial customer's sewer service charge for the following fiscal year. Wastewater strengths for each commercial user group are shown in Table 1.

The wastewater discharge from schools is based on average daily attendance (ADA). The annual wastewater flow per ADA is based on 10 gallons per day per student and a school year of 180 days. This results in an annual flow of 2.41 HCF per ADA.

Inflow/Infiltration

In addition to the wastewater contributed by users, the District's collection system also conveys flow resulting from inflow/infiltration. Due to the interconnection of the collection systems of the District and Watsonville there are no records of the total flow, including I/I, discharged by the District. The extraneous I/I flow is established in the 1984 agreement as 16% of the District's combined residential and commercial flow.

Total Loadings

The number of users in each group and their annual wastewater loadings are summarized on Form 1 in the Appendix. I/I flows are added to those contributed by customers to obtain the total loadings in the District's system. These total loadings are used to calculate the proportionate cost of the service for all customers.

DISTRICT COSTS

The District's total revenue requirement consists of treatment costs, its own operation and maintenance costs, debt service and capital outlays funded from service charge revenues. Treatment costs are billed monthly by the City of Watsonville for processing and disposal of the District's wastewater. The District's O&M costs are associated with the collection and pumping of wastewater. These also include expenses for administration, engineering and source control. Capital outlays are used primarily to fund line repairs and pump station improvements. Debt service is associated with a USDA loan and a State Revolving Fund loan. The latter loan is shared equally with the City of Watsonville.

Watsonville Treatment Costs

Payments to the City of Watsonville for treatment are specified in the agreement between the agencies. The District pays a proportionate share of the operation and maintenance treatment costs based on its annual discharge of flow, BOD and SS to the treatment plant. Treatment capital costs are based on the District's 3.86% share of capacity. The District's estimated total treatment cost in fiscal year 2025/26 is \$532,369 including 12.0% County overhead. These costs are allocated to parameters as follows: flow - 36%, BOD - 38%, SS - 26%.

District Operation and Maintenance Costs

The 2025/26 Preliminary Operations Budget was used for all District expenses except treatment. All budget items are allocated to flow, with two exceptions described above in the Fee Development Policies section. Eighty percent of the collection line O&M budget item is allocated equally to all users and twenty percent is allocated to flow. Thirty five percent of the source control budget item is allocated equally to all non-residential users and 65% is allocated to flow.

District Capital Outlays

A portion of the revenues generated by service charges is used to fund the District's Capital Improvement Program (CIP). In 2025/26, \$235,000 will be used to fund rehabilitation of deteriorated manholes and repairs to sewer mains. Additional CIP projects include \$90,000 for small pump station improvements and \$100,000 for wastewater reserves. These outlays are allocated to flow.

District Debt Service

In May 2020, the District received a loan in the amount of \$4.5 million from the USDA along with a grant for \$4.5 million. This \$9 million was used to replace and rehabilitate deteriorating sewer mains (in excess of 13,000 linear feet) and manholes (more than 50), while upsizing the mains to handle current capacity and allow for better maintenance. The total debt service to be recovered in the 2025/26 rates is \$143,339 and approximately the same amount annually. In addition, \$14,071 will be recovered annually for a debt service reserve fund.

The District is also participating in a \$4.6 million State Revolving Fund loan obtained by the City of Watsonville for the Airport Freedom Trunk Line Sewer Replacement Project. The District pays 50% of the debt service for this loan. The District's share of the debt service to be recovered in 2025/26 and in the following years is \$132,092 annually. The debt service for both these loans is allocated to flow.

Total District costs and their allocations percentages are shown in Table 2. The allocated costs are shown on Form 2 in the Appendix.

EXISTING FEES AND REVENUES

The District's current fee structure is shown in Table 3. These fees have been in effect since July 1, 2024. The total annual revenue projected in fiscal year 2025/26 under these existing fees is \$1,588,423 as shown in Table 4.

Table 2
2025/26 District Costs

Budget Item	2025/26 Amount	Allocation			
		Flow	BOD	SS	User
Watsonville Treatment Charges	\$532,369	36%	38%	26%	
District O&M:					
Sewer Lift Station M&O	\$200,000	100%			
Electrical M&O	\$33,942	100%			
Collection Line M&O	\$60,000	20%			80%
Utilities & Chemicals	\$39,500	100%			
Generator Repair	\$2,000	100%			
Source Control Program	\$6,000	65%			35%
Spill Response - Private	\$2,122	100%			
Spill Response - Mains	\$5,406	100%			
Printing & Mailing	\$6,500	100%			
Permits	\$8,000	100%			
Engineering - Rate Study	\$7,400	100%			
Subtotal District O&M Costs	\$370,870				
District Capital Outlays:					
Engineering - Capital Projects	\$5,000	100%			
Small Pump Station Improvements	\$90,000	100%			
Wastewater Reserves	\$100,000	100%			
Capital Projects	\$230,000	100%			
Subtotal District Capital Outlays	\$425,000				
District Debt Service:					
SRF Loan Share	\$132,092				
UDSA Loan	\$143,339	100%			
Debt Service Reserve	\$14,071	100%			
Subtotal District Debt Service	\$289,502				
Total District Costs	\$1,617,741				

Table 3
Existing District 2024/25 Fees

User Group	Flat Fee	Units	Volume Fee	Units
Single Family Residential	\$882.76	\$/yr.	-	-
Multiple Family Residential	\$576.66	\$/yr.	-	-
Mobile Home Residential	\$890.42	\$/yr.	-	-
Other Businesses	\$198.92	\$/yr.	\$7.84	\$/HCF
Schools	\$198.92	\$/yr.	\$18.90	\$/ADA/yr.

Table 4
Projected 2025/26 Revenues at Existing Fees

User Group	No. of Users	Flow (HCF)	Annual Revenue
Single Family Residential	1,323	129,116	\$1,167,891
Multiple Family Residential	364	21,314	\$209,904
Mobile Home Residential	178	17,545	\$158,495
Other Businesses	23	3,502	\$32,031
Schools (1,032 ADA)	3	2,487	\$20,102
Totals	1,891	173,964	\$1,588,423

FEE INCREASE

Total Revenue Requirement

As discussed in the introduction, the purpose of this study is to develop fees that fund the District's costs in 2025/26 and comply with the requirements of the State Revenue Program Guidelines. In addition to District costs, the 2025/26 revenue requirement includes County collection expenses, which are 1% of total revenues. A summary of the 2025/26 total revenue requirement is shown in Table 5.

Table 5
2025/26 Total Revenue Requirement

Item	2025/26 Amount
Total District Costs (Table 2) Plus: Collection Expenses	\$1,617,741 \$16,341
Total Revenue Requirement	\$1,634,082

Unit Costs

Unit costs are calculated for each cost category and parameter. The application of these unit costs to a user group's wastewater loadings yields its proportionate share of the total revenue requirement. Fees are then designed which recover each user group's proportionate share.

The unit cost for a parameter is calculated by dividing its allocated cost by the total discharge of that parameter from all users. For example, the \$202,300 allocated to BOD is divided by 217,050 pounds of BOD discharged by all users. This results in a unit cost of \$0.9320 per pound of BOD. It is increased by 1.02% to \$0.9415 per pound to account for collection expenses. The calculations of all unit costs are shown on Form 4 in the Appendix. The summarized unit costs are shown in Table 6.

Table 6
2025/26 Summarized Unit Costs

Parameter	Unit Cost	Units
Flow	\$6.1413	\$/HCF
BOD	\$0.9415	\$/lb.
SS	\$0.6422	\$/lb.
User	\$116.04	\$/year
Commercial User	\$197.62	\$/year

Fees

The revenue responsibility of each user group is calculated by applying the unit costs on Form 4 to the wastewater discharges on Form 1. These revenues are shown on Form 6 in the Appendix for each cost category. The total annual revenue required from each user group is then divided by its associated billing units to obtain the revised fees. For example, the \$1,201,895 revenue responsibility of the single family residential group is divided by 1,323 dwelling units to obtain a fee of \$908.46 per year. These calculations are shown on Form 7.

Residential billing units are dwelling units. This results in flat yearly fee for single family, multiple family and mobile home dwellings. Commercial and institutional users are billed on the basis of a two-part fee structure that includes a flat yearly fee and a composite volume fee. The flat yearly fee is the sum of the two unit costs for user and commercial user shown in Table 6. The composite volume fee reflects the BOD and SS concentrations of wastewater shown in Table 1. It recovers the remaining revenue responsibility of each user group. The billing units for schools are ADAs.

The proposed fees for fiscal year 2025/26 are shown in Table 7. A comparison of annual revenues by user group under both the existing fee structure and the revised fee structure is shown in Table 8.

Table 7
Proposed 2025/26 Fees

User Group	Flat Fee	Units	Volume Fee	Units
Single Family Residential	\$908.46	\$/yr.	-	-
Multiple Family Residential	\$591.50	\$/yr.	-	-
Mobile Home Residential	\$916.40	\$/yr.	-	-
Other Businesses	\$197.62	\$/yr.	\$8.12	\$/HCF
Schools	\$197.62	\$/yr.	\$19.57	\$/ADA/yr.

Table 8
2024/25 Revenue Comparison

User Group	No. of Users	2025/26 Revenue		Increase/ (Decrease)	
		Existing Fees	Proposed Fees		
Single Family Residential	1,323	\$1,167,891	\$1,201,893	\$34,002	2.9%
Multiple Family Residential	364	\$209,904	\$215,306	\$5,402	2.6%
Mobile Home Residential	178	\$158,495	\$163,119	\$4,624	2.9%
Other Businesses	23	\$32,031	\$32,980	\$949	3.0%
Schools	3	\$20,102	\$20,787	\$685	3.4%
Totals	1,891	\$1,588,423	\$1,634,085	\$45,662	2.9%

SUMMARY

As indicated in Table 8, an overall fee increase of 2.9% is required to adequately fund the District's revenue requirement in 2025/26. Monthly residential fees increases will be \$2.14 for single family dwelling units, \$1.24 for multiple family dwelling units and \$2.17 for mobile homes. Overall other business fees will increase by 3.0%. School fees will increase by 3.4%. These individual fees comply with the requirements of the State Guidelines and Proposition 218.

APPENDIX

REVENUE PROGRAM FORMS

Freedom County Sanitation District
2025/26 Fees and Revenues
Fees for Sewer Service

Classification	2024/25 Existing Fees				2025/26 Proposed Fees			
	Fixed Fee	Units	Volume Fee	Units	Fixed Fee	Units	Volume Fee	Units
Single Family Residential	\$882.76	\$/yr.	-	-	\$908.46	\$/yr.	-	-
Multiple Family Residential	\$576.66	\$/yr.	-	-	\$591.50	\$/yr.	-	-
Mobile Home Residential	\$890.42	\$/yr.	-	-	\$916.40	\$/yr.	-	-
Bakeries/Donut Shops								
Restaurants								
Other Businesses	\$198.92	\$/yr.	\$7.84	\$/HCF	\$197.62	\$/yr.	\$8.12	\$/HCF
Schools	\$198.92	\$/yr.	\$18.90	\$/ADA/yr.	\$197.62	\$/yr.	\$19.57	\$/ADA/yr.

User Revenues

Users/User Group APN	No. of Users	2024 Flow (HCF/yr.)	User Name	2024/25 Existing Fees	2025/26 Proposed Fees	Increase/ (Decrease)	
				Charge (\$/yr.)	Charge (\$/yr.)	(\$/yr.)	(%)
Single Family Residential	1,323	129,116		\$1,167,891	\$1,201,893	\$34,001	2.9%
Multiple Family Residential	364	21,314		\$209,904	\$215,306	\$5,402	2.6%
Mobile Home Residential	178	17,545		\$158,495	\$163,119	\$4,624	2.9%
Other Businesses							
48-023-02	1	0	Used Car Lot w/SFD	\$199	\$198	(\$1)	-0.7%
48-023-04	1	25	Liquor Store w/SFD	\$395	\$401	\$6	1.4%
48-023-05	1	10	Smoke Shop	\$277	\$279	\$1	0.5%
48-052-32	1	181	Community Christian Church	\$1,618	\$1,667	\$49	3.0%
48-061-30	1	6	Trading Post Store w/SFD	\$246	\$246	\$0	0.2%
48-061-34	1	119	Dental Office	\$1,132	\$1,164	\$32	2.8%
48-061-35	1	672	Freedom Meat Locker	\$5,467	\$5,654	\$187	3.4%
48-061-37	2	74	2 businesses w/4 dwellings	\$978	\$996	\$18	1.9%
48-061-44	1	144	Medical Office	\$1,328	\$1,367	\$39	2.9%
48-321-02	6	162	6 Medical Condos	\$2,464	\$2,501	\$38	1.5%
49-212-30	1	106	Market	\$1,030	\$1,058	\$28	2.8%
51-082-01	1	451	Guest Home	\$3,735	\$3,860	\$125	3.3%
51-101-67	1	128	7th day Adventist Church	\$1,202	\$1,237	\$34	2.9%
51-331-58	1	403	Church of the Nazarene	\$3,358	\$3,470	\$111	3.3%
51-511-29	1	117	Harvest Moon Market	\$1,116	\$1,148	\$31	2.8%
51-532-25	2	904	Mesa Park RR/Sheriff's Sub.	\$7,485	\$7,735	\$250	3.3%
Subtotals	23	3,502		\$32,031	\$32,980	\$949	3.0%
Schools		ADA					
	1	415	Amesti Elementary	\$8,042	\$8,318	\$276	3.4%
	1	469	Calabassas Elementary	\$9,063	\$9,375	\$312	3.4%
	1	148	Sequoia	\$2,996	\$3,094	\$98	3.3%
Subtotals	3	1,032		\$20,102	\$20,787	\$686	3.4%
Totals	1,891			\$1,588,423	\$1,634,085	\$45,663	2.9%

Freedom County Sanitation District											
Form 1 - Summary of Users and Wastewater Characteristics											
Fiscal Year:	2025/26										
Users/User Groups	Number of	Wastewater Characteristics			Average Daily Loadings			Total Annual Loadings			Avg. Residential
	Users	ADWF	BOD	SS	Flow	BOD	SS	Volume	BOD	SS	Flow
		(gpd)	(mg/l)	(mg/l)	(ccf/day)	(lbs/day)	(lbs/day)	(ccf)	(lbs)	(lbs)	(gpd/du)
Single Family Residential	1,323	264,600	200	200	354	441	441	129,116	161,094	161,094	200
Multiple Family Residential	364	43,680	200	200	58	73	73	21,314	26,593	26,593	120
Mobile Home Residential	178	35,956	200	200	48	60	60	17,545	21,891	21,891	202
Other Businesses	23	7,177	200	200	10	12	12	3,502	4,369	4,369	
Schools	3	5,097	200	200	7	9	9	2,487	3,103	3,103	
Subtotal	1,891	356,510			477	595	595	173,965	217,050	217,050	
Infiltration/Inflow @ 16%		57,042			76			27,834			
Totals	1,891	413,551			553	595	595	201,800	217,050	217,050	
City Collection Customers	0	0			0			0			
Totals, inc. City Collection	1,891	413,551			553			201,800			

Freedom County Sanitation District	
Form 2 - O & M Costs and Debt Service	
Fiscal Year:	2025/26
	Projected
Cost Category	Expenses
1. Treatment by City	
Fixed Costs	
Flow	\$0
BOD	\$0
SS	\$0
Total Fixed Costs	\$0
Variable Costs	
Flow	\$191,653
BOD	\$202,300
SS	\$138,416
Total Variable Costs	\$532,369
Subtotal Treatment by City	\$532,369
2. Collection System	
Fixed Costs	
Flow	\$245,942
User	\$48,000
Total Fixed Costs	\$293,942
Variable Costs	
Flow	\$49,028
Total Variable Costs	\$49,028
Subtotal Collection System	\$342,970
3. Miscellaneous	
Fixed Costs	
Flow	\$25,800
Source Control Program	
Commercial User	\$2,100
Subtotal Miscellaneous	\$27,900
4. Total Fixed Costs	\$321,842
5. Total Variable Costs	\$581,397
6. Total O&M Costs	\$903,239
7. Debt Service	
Principal & Interest	
Flow	\$289,502
BOD	\$0
SS	\$0
Total Debt Service Costs	

Freedom County Sanitation District								
Form 4 - Unit Cost Determination								
Fiscal Year:	2025/26							
I/I Allocation:	Loadings	Units	I/I	Total	I/I %	Total inc. City	I/I% inc. City	
	Average Daily	ccf/day	76	553	13.79%	553	13.79%	
	Total Annual	ccf	27,834	201,800	13.79%	201,800	13.79%	
	Parameter	Annual Cost		Annual Cost	Net Cost	Total	Annual Unit Cost	
Cost Category	Allocation	Allocated to	I/I %	Allocated to	Allocated to	Quantities	For Each	Units
	Percentages	Each Parameter		I/I	Each Parameter		Parameter	
1. Capital Outlays								
Flow	100.00%	\$425,000	13.79%	\$58,621	\$366,379	477	\$768.7079	\$/ccf/day
BOD	0.00%	\$0			\$0	595	\$0.0000	\$/lb/day
SS	0.00%	\$0			\$0	595	\$0.0000	\$/lb/day
Subtotal Capital Outlays	100.00%	\$425,000		\$58,621	\$366,379			
2. Debt Service								
Flow	100.00%	\$289,502	13.79%	\$39,931	\$249,571	477	\$523.6293	\$/ccf/day
BOD	0.00%	\$0			\$0	595	\$0.0000	\$/lb/day
SS	0.00%	\$0			\$0	595	\$0.0000	\$/lb/day
Subtotal Debt Service	100.00%	\$289,502		\$39,931	\$249,571			
3. O&M - Treatment								
Fixed								
Flow	0.00%	\$0	13.79%	\$0	\$0	477	\$0.0000	\$/ccf/day
BOD	0.00%	\$0			\$0	595	\$0.0000	\$/lb/day
SS	0.00%	\$0			\$0	595	\$0.0000	\$/lb/day
Variable								
Flow	36.00%	\$191,653	13.79%	\$26,435	\$165,218	173,965	\$0.9497	\$/ccf
BOD	38.00%	\$202,300			\$202,300	217,050	\$0.9320	\$/lb
SS	26.00%	\$138,416			\$138,416	217,050	\$0.6377	\$/lb
Subtotal O&M Treatment	100.00%	\$532,369		\$26,435	\$505,934			
4. O&M - Collection								
Fixed								
Flow	71.71%	\$245,942	13.79%	\$33,923	\$212,019	477	\$444.8413	\$/ccf/day
User	14.00%	\$48,000			\$48,000	1,891	\$25.3834	\$/user
Variable								
Flow	14.30%	\$49,028	13.79%	\$6,762	\$42,266	173,965	\$0.2430	\$/ccf
Subtotal O&M Collection	100.00%	\$342,970		\$40,686	\$302,284			
5. Miscellaneous								
Fixed								
Flow	92.47%	\$25,800	13.79%	\$3,559	\$22,241	477	\$46.6651	\$/ccf/day
Source Control Program								
Commercial User	7.53%	\$2,100			\$2,100	26	\$80.7692	\$/ com. user
Subtotal Miscellaneous	100.00%	\$27,900		\$3,559	\$24,341			
6. Inflow/Infiltration								
User				\$169,231		1,891	\$89.4929	\$/user
7. Totals		\$1,617,741		\$169,231	\$1,448,510			

Freedom County Sanitation District										
Form 6 - Total Revenue										
Fiscal Year:	2025/26									
Users/User Groups	Number of Users	Capital Outlays	Debt Service	O&M Treatment	O&M Collection	Miscellaneous Costs	Inflow/ Infiltration	Total Annual Revenue Req'd.	Miscellaneous Revs. & Exp.	Total Annual Revenue Req'd.
Single Family Residential	1,323	\$271,925	\$185,230	\$375,502	\$222,311	\$16,507	\$118,399	\$1,189,876	\$12,019	\$1,201,895
Multiple Family Residential	364	\$44,889	\$30,578	\$61,988	\$40,395	\$2,725	\$32,575	\$213,150	\$2,153	\$215,303
Mobile Home Residential	178	\$36,951	\$25,171	\$51,026	\$30,164	\$2,243	\$15,930	\$161,485	\$1,631	\$163,117
Other Businesses	23	\$7,375	\$5,024	\$10,185	\$5,703	\$2,305	\$2,058	\$32,650	\$330	\$32,980
Schools	3	\$5,238	\$3,568	\$7,233	\$3,712	\$560	\$268	\$20,580	\$208	\$20,787
Subtotal	1,891	\$366,379	\$249,571	\$505,934	\$302,284	\$24,341	\$169,231	\$1,617,741	\$16,341	\$1,634,082
Infiltration/Inflow		\$58,621	\$39,931	\$26,435	\$40,686	\$3,559				
Totals	1,891	\$425,000	\$289,502	\$532,369	\$342,970	\$27,900	\$169,231	\$1,617,741	\$16,341	\$1,634,082
City Collection Customers	0				\$0			\$0	\$0	\$0
Totals, inc. City Collection	1,891	\$425,000	\$289,502	\$532,369	\$342,970	\$27,900	\$169,231	\$1,617,741	\$16,341	\$1,634,082

Freedom County Sanitation District										
Form 7 - Fee Determination and Revenue Program Summary										
Fiscal Year:	2025/26									
Revenues:						Service Charges:				
Users/User Groups	Number of	Total Annual	Billing	Description		Volume	Units	Flat	Units	Revenue
	Users	Revenues	Units			Fee		Fee		Recovered
Single Family Residential	1,323	\$1,201,895	1,323	Dwelling Units				\$908.46	\$/unit/yr	\$1,201,895
Multiple Family Residential	364	\$215,303	364	Dwelling Units				\$591.49	\$/unit/yr	\$215,303
Mobile Home Residential	178	\$163,117	178	Dwelling Units				\$916.39	\$/unit/yr	\$163,117
Other Businesses	23	\$32,980	3,502	ccf		\$8.12	\$/ccf	\$197.62	\$/yr	\$32,980
Schools	3	\$20,787	1,032	ADA		\$19.57	\$/ADA/year	\$197.62	\$/yr	\$20,787
City Collection Customers	0	\$0	0	Dwelling Units						
Totals	1,891	\$1,634,082								\$1,634,082
Disbursements:										
Cost		Total Annual								
Category		Disbursements								
Capital Outlays		\$425,000								
Debt Service		\$289,502								
O&M - Treatment		\$532,369								
O&M - Collection		\$342,970								
Miscellaneous Costs		\$27,900								
Interest		\$0								
Rate Stabilization		\$0								
Connection Charges		\$0								
Collection Expenses		\$16,341								
Totals		\$1,634,082								
Summarized Unit Costs:										
Unit Cost	Units	Parameter								
\$6.1413	\$/ccf	Flow								
\$0.9415	\$/lb	BOD								
\$0.6442	\$/lb	SS								
\$116.04	\$/user/yr	User								
\$81.59	\$/user/yr	Com. User								
\$197.62	\$/user/yr	Total Co. User								

Freedom County Sanitation District						
District Operation and Maintenance Costs						
Fiscal Year:	2025/26					
District	Revenue Program Classification			2025/26	City Collection	
Budget Items	Cost Category	Fixed/Var.	Allocation	Expenses	Expenses	
Watsonville Treat. Plant Charges	Treatment			\$532,369		
	0.00%	Fixed	Flow	\$0		
	0.00%	Fixed	BOD	\$0		
	0.00%	Fixed	SS	\$0		
	36.00%	Variable	Flow	\$191,653		
	38.00%	Variable	BOD	\$202,300		
	26.00%	Variable	SS	\$138,416		
Sewer Lift Station M&O	Collection	Fixed	Flow	\$200,000	X	
Electrical M&O	Collection	Fixed	Flow	\$33,942		
Collection Line M&O	Collection			\$60,000	X	
Mains	20%	Fixed	Flow	\$12,000		
Laterals	80%	Fixed	User	\$48,000		
Utilities & Chemicals	Collection	Variable	Flow	\$39,500	X	
Generator Repair	Collection	Variable	Flow	\$2,000	X	
Spill Response - Private	Collection	Variable	Flow	\$2,122		
Spill Response - Main	Collection	Variable	Flow	\$5,406		
Engineering-Rate Study	Miscellaneous	Fixed	Flow	\$7,400		
Engineering - Capital Projects	Miscellaneous	Fixed	Flow	\$0		
Source Control Program	Miscellaneous	Fixed		\$6,000		
	35%		Com. User	\$2,100		
	65%		Flow	\$3,900		
Acctg & Audit Fees	Miscellaneous	Fixed	Flow	\$0		
Permits	Miscellaneous	Fixed	Flow	\$8,000		
Printing & Mailing	Miscellaneous	Fixed	Flow	\$6,500		
Pumps & Motors	Miscellaneous	Fixed	Flow	\$0		
Income Survey	Collection	Fixed	Flow	\$0		
M&O Reserves	Miscellaneous	Fixed	Flow	\$0		
Totals				\$903,239		\$370,870
Totals (To Form 2)	Treatment	Fixed	Flow	\$0		
	Treatment	Fixed	BOD	\$0		
	Treatment	Fixed	SS	\$0		
	Treatment	Variable	Flow	\$191,653		
	Treatment	Variable	BOD	\$202,300		
	Treatment	Variable	SS	\$138,416		
	Collection	Fixed	Flow	\$245,942	X	
	Collection	Fixed	User	\$48,000	X	
	Collection	Variable	Flow	\$49,028	X	
	Miscellaneous	Fixed	Flow	\$25,800		
	Miscellaneous	Fixed	Com. User	\$2,100		
Totals				\$903,239		

Freedom County Sanitation District				
Miscellaneous Data				
Fiscal Year:	2025/26			
Capital Outlays Funded from Service Charges:				
	Parameter Allocation			Totals
	Flow	BOD	SS	
Capital Outlays	\$425,000	\$0	\$0	\$425,000
Short-Lived Asset Reserve	\$0	\$0	\$0	\$0
Total Capital Outlays	\$425,000	\$0	\$0	\$425,000
(To Form 6)				
Miscellaneous Revenues & Collection Expenses:				
Interest	\$0			
Rate Stabilization	\$0			
Connection Charges	\$0			
Collection Expenses	\$16,341			
Net Misc. Revs. & Expenses	\$16,341			
	2.9%			
	246.8%			

Freedom County Sanitation District			
District Debt Service Costs			
Fiscal Year:	2025/26		
Debt Service Costs			
			Annual
Issue			Debt Service
SRF for Airport Trunk Line Replacement			\$132,092
USDA for Airport			\$0
USDA for Green Valley			\$0
USDA - Other Projects			\$143,339
USDA - Other Projects DS Reserve			\$14,071
	Total		\$289,502
Allocation of Debt Service Costs			
	Parameter		
Issue	Allocation		Annual
	Percentage		Debt Service
All Debt Service			
Flow	100.00%		\$289,502
BOD	0.00%		\$0
SS	0.00%		\$0
Totals (To Form 2)			\$0
Debt Service Coverage			
Service Charge Revenues	\$1,634,082		
Interest Income	\$0		
Rate Stabilization	\$0		
Total Revenues	\$1,634,082		
O&M Expenses	\$903,239		
Collection Expenses	\$16,341		
Total Expenses	\$919,580		
Net Revenues Available	\$714,502		
SRF for Airport Trunk Line Replacement	\$132,092		
USDA - Other Projects	\$157,410		
Total Debt Service	\$289,502		
Total Debt Service Coverage	2.47		
USDA Debt Service Coverage	4.98		

PUBLIC NOTICE

NOTICE OF PUBLIC HEARING
PROPOSED SCHEDULE OF SEWER SERVICE CHARGES

Notice is hereby given that the Board of Supervisors of the County of Santa Cruz, acting as the Board of Directors of the Freedom County Sanitation District, has scheduled May 6, 2025, at 9:00 a.m. or thereafter, in the Board of Supervisors Chambers, 701 Ocean Street, Santa Cruz, California, to allow public input and comments, if any, and to consider adoption of a resolution establishing the following changes to the District's sewer service charges that would be effective July 1, 2025:

<u>Type of Customer</u>	<u>Existing 2024/2025 Charges Per year</u>	<u>Proposed 2025/2026 Charges Per year</u>	<u>Proposed Change 2025/2026</u>
Single Family Residential	\$882.76	\$908.46	\$2.14/month
Multi-Family/Apartments	\$576.66	\$591.50	\$1.24/month
Mobile Homes	\$890.42	\$916.40	2.16/month
Commercial Facilities Flat Rate	\$198.92	\$197.62	-\$0.11/month plus
Commercial (Per HCF)	\$7.84	\$8.12	\$0.02/HCF
Schools Flat Rate	\$198.92	\$197.62	-\$0.11/month plus
Schools (Per ADA)	\$18.90	\$19.57	\$0.06/ADA

HCF=Hundred Cubic Feet

ADA=Average Daily Attendance

Disclaimer: Rate code assignments are based on the best available data provided by the Assessor's Office, field inspections, and historical data collected by the District. Property owners may contact the District to confirm or update rate codes if there is a concern about accuracy.

These proposed charges are for sanitary sewer service for the 2025-2026 fiscal year. **If you are unsure which user group(s) applies to your parcel, please call (831) 454-2160.** A revenue study was formulated to calculate these fees for sewer service and is available upon request from the Public Works Department, Sanitation Engineering section, at 701 Ocean Street, Room 410, Santa Cruz, CA 95060.

The County complies with the Americans with Disabilities Act (ADA). Questions regarding accommodation under the ADA should be directed the Clerk of the Board at (831) 454-2323. As a courtesy to those affected, please attend the meeting smoke and scent free.

BY ORDER OF THE BOARD OF DIRECTORS
FREEDOM COUNTY SANITATION DISTRICT

By: Chief Deputy Clerk

Notice of Public Hearing

2025/26 Sewer Service Charge Changes



701 Ocean Street, Room 410
Santa Cruz, CA 95060
Phone: 831-454-2160

PSRT STD
U.S. POSTAGE PAID
SANTA CRUZ, CA
PERMIT NO. 223

TO: CURRENT RESIDENT or:



**Leer en
español aquí**

IMPORTANT SEWER RATE INFORMATION ENCLOSED

Freedom County Sanitation District (FCSD)

(831) 454-2160

dpwsanitation@santacruzcounty.us

<http://www.dpw.co.santa-cruz.ca.us/Home/SewerWater.aspx>



The charges included in this notice are based on service charge studies prepared for the FCSD and follow the Revenue Program Guidelines of the State Water Resources Control Board. If you are unsure which user group(s) apply to your parcel, please call (831) 454-2160. A revenue study was formulated to calculate these charges for sewer service and is available upon request from Public Works, Sanitation Engineering section, at:

701 Ocean Street, Room 410, Santa Cruz, CA 95060

Never Flush Wipes Down The Toilet!

"Flushable" wipes clog sewer pipes.

Even though the packaging may say
"flushable" - THEY AREN'T!



Sewer Service Charges - Notice of Public Hearing

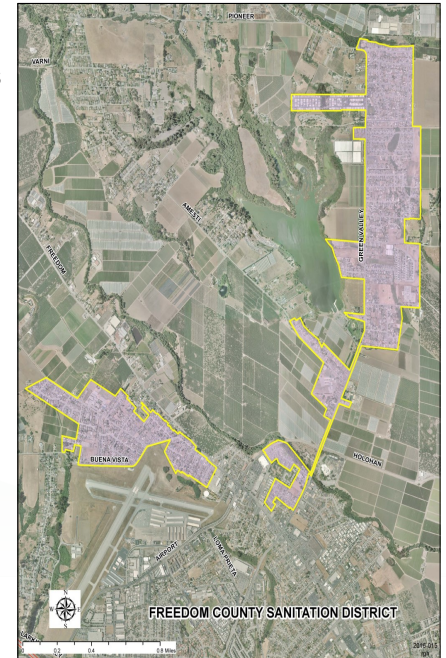
Tuesday, May 6, 2025

Freedom County Sanitation District

Who is the Freedom County Sanitation District (FCSD)? We are the men and women who work on operating, maintaining and improving the vital sewer infrastructure that ensures that our sewers flow properly.

Information about FCSD

- The Freedom County Sanitation District (FCSD) is a non-profit public agency providing sewage collection, treatment and disposal service to the Freedom area.
- The FCSD customers generate approximately 1.35 million gallons of sewage a day.
- Sewage collected by the FCSD is transported through its sewer lines to the wastewater treatment plant that is owned and operated by the City of Watsonville, located on Beach Street.
- This treatment plant has a capacity to treat a total of approximately 16.5 million gallons of wastewater per day to the quality level that meets the stringent Environmental Protection Agency and California State standards for discharge into the Monterey Bay.
- FCSD pays for a portion of the treatment costs for the City of Watsonville wastewater treatment plant. These costs are calculated yearly based on the costs incurred from our FCSD's transported wastewater.
- Maintenance and improvement projects are funded through a combination of sewer service charges, grants, loans and FCSD reserves. Recently FCSD secured \$9 Million in grant and loan funds from the USDA and rehabilitated over 13,000 linear feet of sewer mains and over 50 manholes. Another \$6 Million grant from the State Water Resources Control Board funded the replacement or rehabilitation of nearly 10,000 more linear feet of sewer mains and 30 more manholes.



Freedom County Sanitation District (FCSD)

Your Sewer Service Provider

The Freedom County Sanitation District (FCSD) is committed to providing excellent service to the community. To ensure that we protect the environment, public health, and the integrity of our system, the infrastructure needs constant maintenance and updating. In order to continue to maintain and replace this aging sewer system, it is necessary to increase sewer service charges for the fiscal year 2025/26.

Notice is hereby given that the Board of Directors of the Freedom County Sanitation District, has scheduled May 6, 2025, at 9:00 a.m. or thereafter, for a meeting at the Board of Supervisors Chambers, 701 Ocean Street, Santa Cruz, California to allow public input and comments, if any, and to consider adoption of an ordinance establishing the proposed sewer charges shown below.

These charges would be effective July 1, 2025.

The County complies with the Americans with Disabilities Act (ADA). Questions regarding accommodation under the ADA should be directed to the Clerk of the Board at (831) 454-2323. As a courtesy to those affected, please attend the meeting smoke and scent free.

BY ORDER OF THE BOARD OF DIRECTORS
FREEDOM COUNTY SANITATION DISTRICT

By: Chief Deputy Clerk

Current Rates and Proposed Changes

RESIDENTIAL CUSTOMERS

User Group ¹	Current Charges	Proposed Charges	Proposed Increase
Residential ²	\$882.76/year	\$908.46/year	\$2.14/month
Multiple Family ³	\$576.66/year	\$591.50/year	\$1.24/month
Mobile Home	\$890.42/year	\$916.40/year	\$2.16/month

COMMERCIAL CUSTOMERS

User Group ¹	Current Charges	Proposed Charges	Proposed Changes
	Flat Rate + Volume Rate	Flat Rate + Volume Rate	Flat Rate + Volume Rate
Commercial Customers	\$198.92/year + \$7.84/HCF	\$197.62/year + \$8.12/HCF	-\$0.11/month + \$0.02/HCF

SCHOOLS

User Group ¹	Current Charges	Proposed Charges	Proposed Changes
	Flat Rate + Volume Rate	Flat Rate + Volume Rate	Flat Rate + Volume Rate
All Schools	\$198.92/year + \$18.90/ADA	\$197.62/year + \$19.57/ADA	-\$0.11/month + \$0.06ADA

HCF = Hundred Cubic Feet of Water

ADA = Average Daily Attendance

¹The FCSD does not apply sewer rates to vacant land or facilities on septic tanks.

²Residential refers to houses.

³Multiple Family group refers to condos, townhouses, accessory dwelling units (ADUs) and apartments.

How Can I Participate?

The Freedom County Sanitation District welcomes your participation and input throughout the process as the Board of Directors considers the charge increases explained in this notice. If you have any questions or comments about the proposed charges, you can call (831) 454-2160.

Any property owner(s) within the District, may present verbal and/ or written protest to the Board of Directors on the proposed charges, and the Board will consider all oral and written protests.

In order to be counted, protests must be in writing and include the following:

- The service address, the assessor's parcel number, a statement of protest, and the name and signature of the individual qualified to protest the charges.

Only one written protest will be counted for each individual parcel. Written protests must be received prior to the conclusion of the public hearing. Mail to: Departmental Analyst, Freedom County Sanitation District, Governmental Center, 701 Ocean Street, Room 410, Santa Cruz, CA 95060.

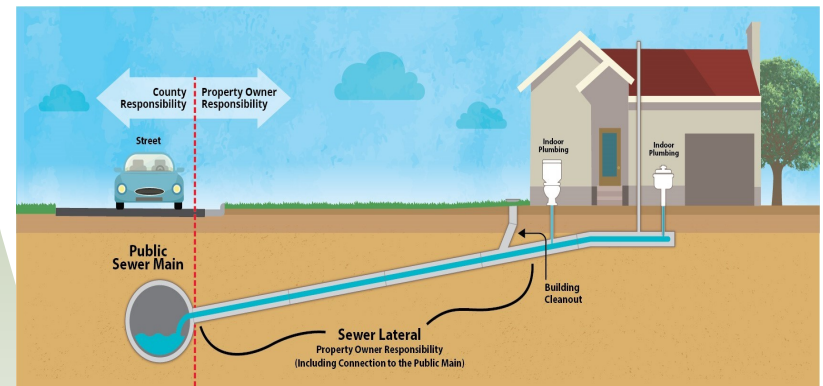
Your Sewer Lateral Responsibilities

Did you know:

- You are responsible for the maintenance, inspections, and repairs of your private sewer lateral.
- Video inspections of your lateral and cleanout installation are required:
 - ⇒ Prior to property sale
 - ⇒ With remodel / addition permit
 - ⇒ When you connect to an existing lateral

For more information, please visit the lateral section located at:

<https://cdi.santacruzcountyca.gov/PublicWorks/SewerWater/SewerLateralResources.aspx>



Owners of private sewer collection systems (with four or more units) are required to inspect and report to the Sanitation District on the condition of their sewers. Non-compliance may result in penalties. Questions may be directed to District Staff.

Avoid Sewage Spills and Unnecessary Damage

Notify us at (831) 477-3907 of any sewer spills or odors.

Pursuant to FCSD Code Section 3.04.250, it is the property owner's responsibility to install and maintain an overflow or backflow protective device on your sewer lateral when any building's lowest floor elevation is less than one foot above the rim elevation of the nearest upstream manhole. For further information regarding backflow devices, please contact (831) 454-2160.

Aviso de Audiencia Pública

2025-26 Cambios A Los Cargos De Servicio De Alcantarillado



701 Ocean Street, Sala 410
Santa Cruz, CA 95060
Tel: 831-454-2160

PSRST STD
U.S. POSTAGE PAID
SANTA CRUZ, CA
PERMIT NO. 223

INFORMACIÓN IMPORTANTE SOBRE TARIFAS DE ALCANTARILLADO ADJUNTA

Distrito de Saneamiento del Condado Freedom
(FCSD por sus siglas en ingles)

(831) 454-2160

dpwsanitation@santacruzcounty.us

<http://www.dpw.co.santa-cruz.ca.us/Home/SewerWater.aspx>



Los cargos incluidos en este aviso se basan en estudios de tarifas de servicio preparados para el FCSD y siguen las pautas del Programa de Ingresos de la Junta de Control de Recursos de Agua del Estado. Si no está seguro a qué grupo(s) de usuarios corresponde su parcela, por favor llame al (831) 454-2160. Se formuló un estudio de ingresos para calcular estos cargos por servicio de alcantarillado y está disponible previa solicitud en Obras Públicas, sección de Ingeniería Sanitaria, en:

701 Ocean Street, Sala 410, Santa Cruz, CA 95060

¡Nunca Tire Toallitas en la Taza del Baño!

"Las toallitas "flushable" obstruyen las tuberías de alcantarillado. ¡Aunque el empaque pueda decir "flushable", NO LO SON!"



Cargos de servicio de alcantarillado - Aviso de Audiencia Pública

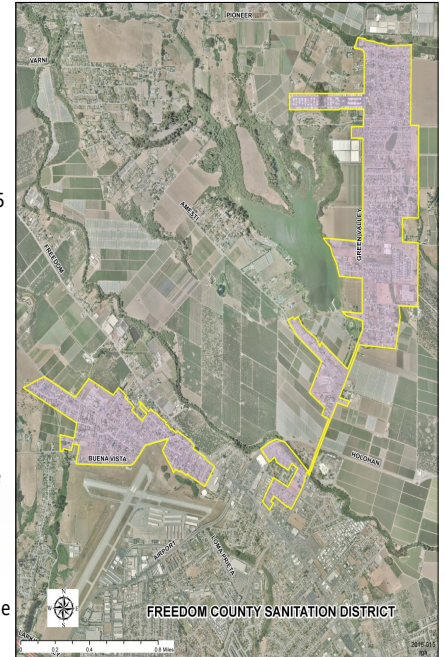
Martes 6 de Mayo del 2025

Distrito de Saneamiento del Condado Freedom

¿Que es el Distrito de Saneamiento del Condado de Freedom (FCSD)? Nosotros somos, los hombres y mujeres que trabajamos en operar, mantener y mejorar la infraestructura vital de alcantarillado que garantiza que nuestros sistemas de alcantarillado funcionen adecuadamente.

Información sobre el FCSD

- El Distrito de Saneamiento del Condado de Freedom (FCSD) es una agencia pública sin fines de lucro que brinda servicio de recolección, tratamiento y disposición de aguas residuales en el área de Freedom.
- Los clientes del FCSD generan aproximadamente 1.35 millones de galones de aguas residuales al día.
- Las aguas residuales recolectadas por el FCSD son transportadas a través de sus líneas de alcantarillado hasta la planta de tratamiento de aguas residuales la cual es propiedad y operada por la Ciudad de Watsonville, ubicada en la calle Beach.
- Esta planta de tratamiento tiene una capacidad para tratar un total de aproximadamente 16.5 millones de galones de aguas residuales por día hasta alcanzar el nivel de calidad que cumple con los estrictos estándares de la Agencia de Protección Ambiental y del Estado de California para descargarla en la Bahía de Monterey.
- El FCSD paga una parte de los costos de tratamientos de la planta de tratamiento de aguas residuales de la Ciudad de Watsonville. Estos costos se calculan anualmente en función de los costos incurridos por el transporte de aguas residuales de FCSD.
- Los proyectos de mantenimiento y mejora son financiados a través de una combinación de cargos por servicio de alcantarillado, subvenciones, préstamos y reservas del FCSD. Recientemente, el FCSD aseguró \$9 millones en fondos de subvenciones y préstamos del USDA y rehabilitó más de 13,000 pies lineales de alcantarillado y más de 50 pozos de alcantarilla. Otros \$6 millones de subvención de la Junta de Control de Recursos de Agua del Estado rehabilitarán aproximadamente 10,000 pies lineales adicionales de alcantarillado y 30 pozos de alcantarilla.



Distrito de Saneamiento del Condado Freedom

Su proveedor de servicios de alcantarillado.

El Distrito de Saneamiento del Condado de Freedom (FCSD) está comprometido a proporcionar un excelente servicio a la comunidad. Para garantizar que protejamos el medio ambiente, la salud pública y la integridad de nuestro sistema, la infraestructura requiere un mantenimiento y actualización constante. Con el fin de continuar manteniendo y reemplazando este sistema de alcantarillado envejecido, es necesario aumentar los cargos por servicio de alcantarillado para el año fiscal 2025-26.

Por la presente, se notifica que la Junta Directiva del Distrito de Saneamiento del Condado de Freedom esta programada para el 6 de mayo del 2025, a las 9:00 a.m. o después, para una reunión presencial en las Salas de la Junta de Supervisores, 701 Ocean Street, Santa Cruz, California, para permitir la participación y comentarios del público, si los hay, y para considerar la adopción de una ordenanza que establezca los cargos de alcantarillado propuestos que se muestran a continuación.

Estos cargos serían efectivos a partir del 1 de julio del 2025.

El condado cumple con la Ley de Estadounidenses con Discapacidades (ADA). Las preguntas sobre alojamiento bajo la ADA deben dirigirse al Secretario/a de la Junta al (831) 454-2323. Como cortesía para aquellos afectados, le pedimos asistir a la reunión sin humo ni fragancias.

POR ORDEN DE LA JUNTA DIRECTIVA

DISTRITO DE SANEAMIENTO DEL CONDADO DE FREEDOM

Por: Secretario/a Adjunto/a Principal

Tarifas Actuales y Aumentos Propuestos

CLIENTES RESIDENCIALES

Grupo de Usuario ¹	Cargos Actuales	Cargos Propuestos	Cargos Propuesto
Residencial ²	\$882.76/año	\$908.46/año	2.14/mensual
Familia Múltiple ³	\$576.66/año	\$591.50/año	\$1.24/mensual
Casa Móvil	\$890.42/año	\$916.40/año	\$2.16/mensual

CLIENTES COMERCIALES

Grupo de Usuario ¹	Cargos Actuales		Cargos Propuestos		Cargos Propuesto	
	Precio Fijo	+ Precio por Volumen	Precio Fijo	+ Precio por Volumen	Precio Fijo	+ Precio por Volumen
Cliente Comercial	\$198.92/año	+ \$7.84/CPC	\$197.62/año	+ \$8.12/CPC	-\$0.11/mes	+ \$0.02/CPC

ESCUELAS

Grupo de Usuario ¹	Cargos Acuatles		Cargos Propuestos		Cargos Propuesto	
	Precio Fijo	+ Precio por Volumen	Precio Fijo	+ Precio por Volumen	Precio Fijo	+ Precio por Volumen
Todas las Escuelas	\$198.92/año	+ \$18.90/PAD	\$197.62/año	+ \$19.57/PAD	-\$0.11/mes	+ \$0.06/PAD

CPC = Cien Pies Cúbicos de Agua

PAD = Promedia de Asistencia Diaria

¹ El FCSD no aplica tarifas de alcantarillado a terrenos vacíos o instalaciones con tanques sépticos.

² Residencial se refiere a casas.

³ El grupo de Familias Múltiples se refiere a condominios, casas adosadas, unidades de vivienda accesoria (ADUs) y apartamentos.

Exención de responsabilidad: Las asignaciones de códigos de tarifa se basan en los mejores datos disponibles proporcionados por la Oficina del Tasador, inspecciones en el terreno y datos históricos recopilados por el Distrito. Los propietarios de propiedades pueden contactar al Distrito para confirmar o actualizar los códigos de tarifa si tienen alguna preocupación sobre la precisión.

¿Cómo puedo participar?

El Distrito de Saneamiento del Condado de Freedom agradece su participación y aportes durante todo el proceso mientras la Junta Directiva considera los aumentos de tarifas explicados en este aviso. Si tiene alguna pregunta o comentario sobre las tarifas propuestas, puede llamar al (831) 454-2160.

Cualquier dueño@ (s) de propiedad dentro del Distrito pueden presentar protestas verbales y/o escritas ante la Junta Directiva sobre las tarifas propuestas, y se considerará todas las protestas verbales y escritas. Para ser contadas, las protestas deben ser por escrito e incluir lo siguiente:

- El domicilio del servicio, el número de parcela del tasador, una declaración de protesta y el nombre y firma del individuo calificado para protestar los cargos.

Solo se contará una protesta escrita por cada parcela individual.

Las protestas enviadas por correo deben recibirse antes de la conclusión de la audiencia pública. Envíelas a: Analista Departamental, Distrito de Saneamiento del Condado de Freedom, Centro Gubernamental, 701 Ocean Street, Sala 410, Santa Cruz, CA 95060.

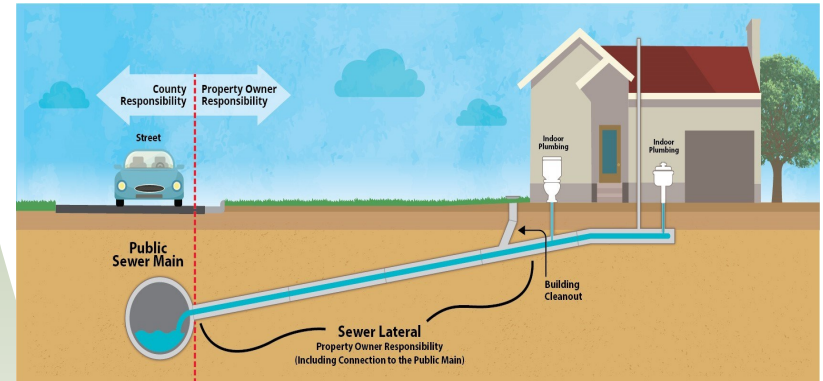
Sus Responsabilidades con respecto al Desagüe Lateral del Alcantarillado

¿Sabía usted?:

- Usted es responsable del mantenimiento, inspecciones y reparaciones de su desagüe lateral privado.
- Las inspecciones de video de su lateral y la instalación de limpieza son requeridas:
 - ⇒ Antes de la venta de su propiedad
 - ⇒ Con un permiso de remodelación / adición
 - ⇒ Cuando se conecta a una lateral existente

Para obtener más información, visite la sección de lateral ubicada en:

<https://cdi.santacruzcountyca.gov/PublicWorks/SewerWater/SewerLateralResources.aspx>



Los propietarios de sistemas de recolección de aguas residuales privados (con cuatro o más unidades) están obligados a inspeccionar y reportar al Distrito de Saneamiento sobre la condición de sus alcantarillados. El incumplimiento puede resultar en multas. Puede dirigir preguntas al personal del Distrito.

Evite Derrames de Aguas Residuales y Daños Innecesarios

Notifiquenos al (831) 477-3907 de cualquier derrame de aguas residuales u olores.

A conformidad con la Sección 3.04.250 del Código del FCSD, es responsabilidad del propietario instalar y mantener un dispositivo de protección contra rebosamientos o retrocesos en el desagüe lateral cuando la elevación del piso más bajo de cualquier edificio mida menos de un pie de encima de la elevación del borde de la boca de pozo de alcantarilla más cercana aguas arriba. Para obtener más información sobre los dispositivos de retroceso, comuníquese al (831) 454-2160.